

# Aboriginal Community Plan 2017-2020

## Consultation and survey outcomes

Between January and February 2017, we engaged with local Elders, groups, service providers, government organisations and community members to review and update Council's three year Aboriginal Community Plan and Statement of Commitment to Aboriginal and Torres Strait Islander people.

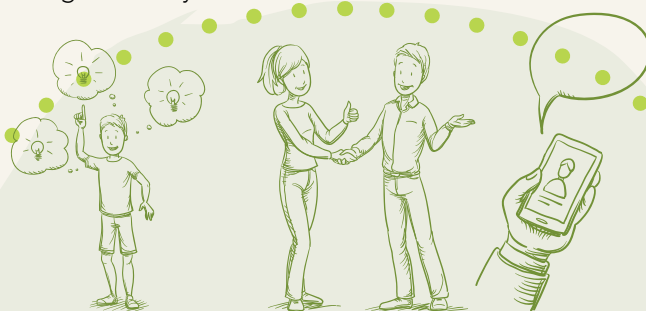
Once adopted, the Aboriginal Community Plan will form part of a suite of plans that identify Council's actions in working with various groups, such as children and families, young people, multicultural groups, the ageing population, and people with disability. We also host a number of local community events throughout the year.



### Who participated?

More than 200 people actively participated in the consultation, including:

- Aboriginal and non-Aboriginal residents
- Bahtabah and Westlakes Elders groups
- The Awabakal, Bahtabah and Biraban Local Aboriginal Land Councils
- Lake Macquarie Aboriginal Reference Group
- 10 community and support service providers
  - 3 education and training providers



### How did they participate?

- 315 visitors to our Have Your Say engagement webpage
  - 99 community surveys
- 6 workshops across the City
  - 6,710 people reached via Facebook

### What we heard

We asked about local challenges, success stories and ideas for ways Council can contribute or provide support.

Here is a selection of some of the ideas and comments we heard:

"The strength of our people, our connection to country, our connection with spirit our Ancestors and our Dreamtime."

"I would like to see Council focus on promoting more culture awareness and cultural celebration in the wider community throughout the year and not just on culturally significant dates."

"Youth empowerment, cultural learning and youth leadership...there is a lack of youth wellbeing specific roles in the region."

"Engaging local Elders, leaders and youth leaders and sharing culture through stories, art and dance."

"More interaction with the Indigenous people with regards to land and planning management of sacred sites."

"Partnerships with general services to support specific programs... playgroups, health programs, [and] school connections."

"I would like the Council to provide work experience / traineeships within the Council for Aboriginal youth. I feel it is important that young Aboriginal people understand what Council is and how it functions."

"The most important initiative & programs should be delivered to our children and families at our Lake Macquarie schools!"

### Next steps

We are now reviewing all community input to prepare our Aboriginal Community Plan 2017-2020 and update the Statement of Commitment to Aboriginal and Torres Strait Islander people.

The draft Plan is expected to be on public exhibition in mid-2017, following Council endorsement.