

# Blue Mountains Heritage Register Review

Heritage Inventory - 2016 Heritage Review

SHI Number

1170639

Study Number

WF021

Item Name: **Wentworth Falls Lake Reserve**

Location: **33-39; 41-51, 51A, 53-59 Sinclair Crescent, 20, 22-36 Warat**

Address: 33-39; 41-51, 51A, 53-59 Sinclair  
Crescent, 20, 22-36 Waratah Road

DUAP Region: Sydney West

Suburb / Nearest Town: Wentworth Falls 2782

Historic region: Sydney

Local Govt Area: Blue Mountains

Parish:

State:

County:

Other/Former Names: Wentworth Falls Lake

Area/Group/Complex:

Group ID:

Aboriginal Area:

Curtilage/Boundary: Reserves 84734 (gazetted 24/4/1964) R84733 and Lots 15-29  
DP3009, Lots 1 & 2 DP 510399, unmade section of Napoleon Road  
between Pine Ave and Bellevue Road.

Item Type: Landscape

Group: Landscape - Cultural

Category: Historic Landscape

Owner: Multiple Owners

Admin Codes:

Code 2:

Code 3:

Current Use: Recreation

Former Uses: Railway Reservoir

Assessed Significance: **Local**

Endorsed Significance:

**Statement of Significance:** Reservoirs providing water to locomotives were essential in the age of steam and  
Wentworth Falls Lake is a good representative example of the Mountain dams in the late  
Victorian and Edwardian period.

Wentworth Falls Lake is of aesthetic significance at a local level for its ability to demonstrate  
a past way of life as an integral part of powering steam trains and now as a place for active  
and passive recreation that has considerable appeal for its natural vegetation and for its  
collection of sandstone sculptures which interpret common local plants.

The 16 items of outstanding public art commissioned and erected in the Reserve in 1998-9  
are of uncommon community value, enhanced by the admirable Education Kit issued in  
2000.

Wentworth Falls Lake Reserve, particularly its area of Blue Mountains Hanging Swamp, is of  
scientific importance as the habitat of a threatened species, the Blue Mountains Water  
Skink, *Eulamprus leuraensis*. The first specimen of this rare lizard was collected in the  
reserve.

**Historical Notes or Provenance:** In the days of steam, railways needed a secure water supply. Wentworth Falls Lake is the  
third and last in a sequence of railway reservoirs near the main line in the area. The first  
dam in the 1860s was a little to the west of the railway station and predated it. The second

Heritage Inventory - 2016 Heritage Review

Date: 14/11/2016

Full Report with Images

Page 1

This report was produced using the Heritage Database Software provided by the Heritage Branch, NSW Department of Planning.

# Blue Mountains Heritage Register Review

## Heritage Inventory - 2016 Heritage Review

SHI Number

1170639

Study Number

WF021

Item Name: **Wentworth Falls Lake Reserve**

Location: **33-39; 41-51, 51A, 53-59 Sinclair Crescent, 20, 22-36 Warat**

reservoir, made necessary by the long drought in the late 1870s and early 1880s, dammed Jamison Creek with a 16-metre long brick and concrete wall in what is now Wilson Park. Finally in 1906-8 a new railway reservoir, the present lake, was created by the construction of a earth wall 150 metres long across the upper waters of Jamison Creek north of the highway. (Austin, Craven & Silvey, Brief History of Wentworth Falls, 5)

The wall was heightened at various times to enhance capacity and in 1991 the old spillway was replaced and the earth wall took its present shape. (Austin et al., 5)

The present reserve between Sinclair Crescent and the lake was gazetted on 24 April 1964. (www.bmcc.nsw.gov.au). Accessibility of the Lake from the north was enhanced by construction of a boardwalk between Pine Avenue and Waratah Road in 2000 (Anon., 2000).

Themes:	National Theme	State Theme	Local Theme
	3. Economy	Transport	(none)
	8. Culture	Creative endeavour (Cultur	(none)
	8. Culture	Leisure	(none)

Designer:

Maker / Builder:

Year Started: 1906      Year Completed: 1908      Circa: No

**Physical Description:** Wentworth Falls Lake is centrally located in Wentworth Falls north of the Great Western Highway, off Sinclair Crescent. There is a reserve on its margin, which encompasses a picnic area and playground with modern play equipment in the shape of a boat.

The vegetation near the picnic area beside Sinclair Crescent is generally woodland. A series of sandstone sculptures representing the seedpods of native plants in the area is placed in the woodland and along the shore. These were created as part of the Wentworth Falls Lake Sculpture Project c.1998-1999, organised by Gabriella Hegyes and are:

- Juncus usitatus (Common Rush) by Nick Dorrer
- Eucalyptus radiata ssp. radiata (Narrow-leaved Peppermint) by Ellen
- Leptospermum grandifolium (Woolly Tea-tree) by Anna Baird
- Gleichenia dicarpa (Pouched Coral Fern) by Mary Anderson
- Callistemon citrinus (Crimson Bottlebrush) by Michael Byrt
- Grevillea acanthifolia (Swamp Grevillea) by Vicki Skeen
- Patersonia sericea (Native Iris) by Robyn Austin
- Xanthorrhoea resinifera (Grass Tree) by Peter Baird
- Allocasuarina littoralis (Black She-oak) by Doris Rainsford
- Hakea teretifolia (Dagger Hakea) by Hugo Rojas

## Heritage Inventory - 2016 Heritage Review

Date: 14/11/2016

Full Report with Images

Page 2

This report was produced using the Heritage Database Software provided by the Heritage Branch, NSW Department of Planning.

# Blue Mountains Heritage Register Review

Heritage Inventory - 2016 Heritage Review

SHI Number

1170639

Study Number

WF021

Item Name: **Wentworth Falls Lake Reserve**

Location: **33-39; 41-51, 51A, 53-59 Sinclair Crescent, 20, 22-36 Warat**

- Acacia elata (Cedar Wattle) by Alexis Apfelbaum
- Lambertia formosa (Mountain Devil) by Marco Grilli
- Banksia serrata (Old Man Banksia) by Maija Collishaw
- Telopea speciosissima (Waratah) by Gabriella Hegyes
- Isopogon anemonifolius (Drumsticks) by Sonja van As
- Persoonia pinifolia (Pine-leaf Geebung) by Petrina Louise Fuda

(Hegyes, Wentworth Falls Lake Sculpture Project)

Blue Mountains Hanging Swamp dominates the western end of reserve and the northern slope of the lake and the swamps of Wentworth Falls Lake Reserve help protect the water quality in Jamison Creek that flows into Blue Mountains National Park and Lake Burragorang. The first specimen of the Blue Mountains Water Skink, *Eulamprus leuraensis*, was collected in Wentworth Falls Lake Reserve ([www.bmcc.nsw.gov.au](http://www.bmcc.nsw.gov.au)). The large area of swamp that feeds the lake is home to this rare lizard, which is a threatened species. ([www.deh.gov.au/biodiversity/threatened/recovery/blue-mtns-water-skink/appendix1.html](http://www.deh.gov.au/biodiversity/threatened/recovery/blue-mtns-water-skink/appendix1.html).)

Physical Condition: Good

Modification Dates:

Recommended  
Management:

Management:

Further Comments:

**Criteria a)** Reservoirs providing water to locomotives were essential in the age of steam and Wentworth Falls Lake is a good representative example of the Mountain dams in the late Victorian and Edwardian period.

**Criteria b)**

**Criteria c)** Wentworth Falls Lake is of aesthetic significance at a local level for its ability to demonstrate a past way of life as an integral part of powering steam trains and now as a place for active and passive recreation that has considerable appeal for its natural vegetation and for its collection of sandstone sculptures which interpret common local plants.

**Criteria d)** The 16 items of outstanding public art commissioned and erected in the Reserve in 1998-9 are of uncommon community value, enhanced by the admirable Education Kit issued in 2000.

**Criteria e)** Wentworth Falls Lake Reserve, particularly its area of Blue Mountains Hanging Swamp, is of scientific importance as the habitat of a threatened species, the Blue Mountains Water Skink, *Eulamprus leuraensis*. The first specimen of this rare lizard was collected in the reserve.

**Criteria f)**

**Criteria g)**

Heritage Inventory - 2016 Heritage Review

Date: 14/11/2016

Full Report with Images

Page 3

This report was produced using the Heritage Database Software provided by the Heritage Branch, NSW Department of Planning.

# Blue Mountains Heritage Register Review

## Heritage Inventory - 2016 Heritage Review

SHI Number

**1170639**

Study Number

**WF021**

Item Name: **Wentworth Falls Lake Reserve**

Location: **33-39; 41-51, 51A, 53-59 Sinclair Crescent, 20, 22-36 Warat**

Integrity / Intactness: High

References:	Author	Title	Year
		www.bmcc.nsw.gov.au accessed September	2004
		www.deh.gov.au/biodiversity/threatened/recovery/blue-mtns-water-skink/appendix1.html accessed September	2004
	Anon.,	New boardwalk at Wentworth Falls Lake, Blue Mountains Gazette (2 August 2000).	2000
	Gabriella Hegyes	Wentworth Falls Lake Sculpture Project, Blue Mountains City Council, Katoomba.	2000
	Gabriella Hegyes, Elin Howe and Margaret Baker	Wentworth Falls Lake Sculpture Project: Education Kit, Blue Mountains City Council, Katoomba.	2000
	Jack Austin, Brian Craven and Gwen Silvey	A Brief History of the Township of Wentworth Falls, Blue Mountains Historical Society, Wentworth Falls.	1996

Studies:	Author	Title	Number	Year
	Blue Mountains City Council	Technical Audit BM Heritage Register	WF021	2008
	Jack, Hubert, Lavelle, Morris	Blue Mountains Heritage Review	WF021	2003
	Tropman and Tropman	Heritage Study Review, Blue Mountains	WF021	1992
	Croft & Associates Pty Ltd & Meredith Walker	Blue Mountains Heritage Study	WF021	1983
	Blue Mountains City Council	LEP 2015 Heritage Review		2016
	Jim Smith	LEP 1991 Consultant Review		2010

Parcels:	Parcel Code	LotNumber	Section	Plan Code	Plan Number
	LOT	7024		DP	1127147
	LOT	7023		DP	1127147
	LOT	2		DP	510399
	LOT	1		DP	510399
	LOT	2		DP	706080
	PART LOT	11		DP	751646
	LOT	1		DP	824022

Latitude:

Longitude:

Location validity:

Spatial Accuracy:

Map Name:

Map Scale:

AMG Zone:

Easting:

Northing:

Listings:	Name:	Title:	Number:	Date:
	Local Environmental Plan	LEP2015	WF021	21/12/2015
	Local Environmental Plan	LEP1991	WF021	27/12/1991

## Heritage Inventory - 2016 Heritage Review

Date: 14/11/2016

Full Report with Images

Page 4

This report was produced using the Heritage Database Software provided by the Heritage Branch, NSW Department of Planning.

# Blue Mountains Heritage Register Review

Heritage Inventory - 2016 Heritage Review

SHI Number

1170639

Study Number

WF021

Item Name: **Wentworth Falls Lake Reserve**

Location: **33-39; 41-51, 51A, 53-59 Sinclair Crescent, 20, 22-36 Warat**

Heritage study

WF021

Local Instrument: LEP 2015

Local Identifier: WF021

Draft Instrument:

Technical Comment:

**Update Notes:** (1) Name changed from Wentworth Falls Lake. Lot / DP and locations added. Minor alteration to content. (Jim Smith 2010)  
(2) 2016 Review - name updated, Aboriginal statement added, minor Admin updates (CA/Nov2016)

**Aboriginal Heritage:** The Blue Mountains Local Government Area is within the Country of the Darug and Gundungurra peoples and Blue Mountains City Council respects their cultural heritage and deep ongoing connection to this Country.  
This inventory sheet documents the European occupation of the site only, and the heritage significance of the place in this context (assessed against the heritage criteria set by the NSW Heritage Council).

This does not therefore, represent a complete history of the place, or represent the perspectives of Darug and Gundungurra Traditional Owners in relation to the colonial impacts on this site. Consultation with Traditional Owners and other Aboriginal stakeholders is required, before Aboriginal Cultural Heritage that may be associated with this place, can be recorded.

**Data Entry:** Date First Entered: 30/09/2004

Date Updated: 11/11/2016

Status: Partial

Heritage Inventory - 2016 Heritage Review

Date: 14/11/2016

Full Report with Images

Page 5

This report was produced using the Heritage Database Software provided by the Heritage Branch, NSW Department of Planning.

# Blue Mountains Heritage Register Review

Heritage Inventory - 2016 Heritage Review

SHI Number

**1170639**

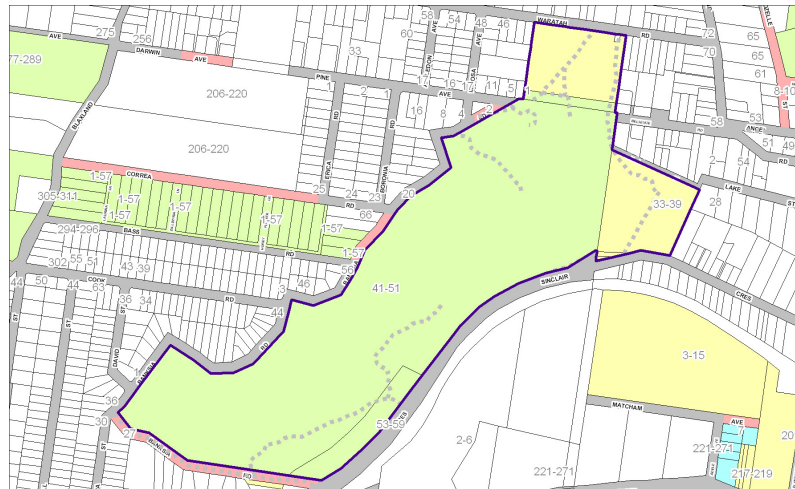
Study Number

**WF021**

Item Name: **Wentworth Falls Lake Reserve**

Location: **33-39; 41-51, 51A, 53-59 Sinclair Crescent, 20, 22-36 Warat**

Image:



Caption: Location Map

Copyright: City Planning

Image by: City Planning

Image Date: 23/03/2011

Image Number:

Image Path:

Image File: 1170639b00.jpg

Thumb Nail Path:

Thumb Nail File:

Heritage Inventory - 2016 Heritage Review

Date: 14/11/2016

Full Report with Images

Page 6

This report was produced using the Heritage Database Software provided by the Heritage Branch, NSW Department of Planning.

# ***Blue Mountains Heritage Register Review***

Heritage Inventory - 2016 Heritage Review

SHI Number

**1170639**

Study Number

**WF021**

Item Name: **Wentworth Falls Lake Reserve**

Location: **33-39; 41-51, 51A, 53-59 Sinclair Crescent, 20, 22-36 Warat**

Image:



Caption: Wentworth Falls Lake Reserve

Copyright:

Image by:

Image Date: 9/01/2007

Image Number:

Image Path:

Image File: 1170639b01.jpg

Thumb Nail Path:

Thumb Nail File:

Heritage Inventory - 2016 Heritage Review

Date: 14/11/2016

Full Report with Images

Page 7

This report was produced using the Heritage Database Software provided by the Heritage Branch, NSW Department of Planning.