



POTTSVILLE

OPEN SPACE MASTERPLAN

DESIGN PROPOSALS

Prepared by Plummer & Smith Pty Ltd for Tweed Shire Council

We acknowledge the Traditional Custodians of country of this site - the Bundjalung people.

We acknowledge the Traditional Custodians of country throughout Australia and their connections to land, water and community. We pay our respect to Elders past and present and extend that respect to all Aboriginal and Torres Strait Islander peoples today.



Authorship
Plummer and Smith
PO Box 204
Murwillumbah NSW 2484
www.plummerandsmith.com.au



TWEED
SHIRE COUNCIL

Council Contact
Tweed Shire Council
10-14 Tumbulgum Road
Murwillumbah NSW 2484
02 6670 2400

This document illustrates the Design Proposals of the *Pottsville Open Space Masterplan*. To view background and site analysis information please refer to the *Pottsville Open Space Masterplan- Background & Analysis* document.

Contents

Introduction	4
Understanding the place and community desires	
1 Refer to <i>Background & Analysis</i> document	
Site analysis- existing conditions and opportunities	
2 Refer to <i>Background & Analysis</i> document	
Vision and strategies for the future	
3 Refer to <i>Background & Analysis</i> document	
The plan	
4.1 Proposal	8
4.2 Environmental Park/Centre	10
4.3 Ambrose Brown Park	14
4.4 Pottsville RSL Memorial Park (Pottsville Oval)	16
4.5 Philip Street Reserve	22
4.6 Hardy Park North	26
4.7 Biking facility	30
Palette- character, materials, plants and signage	
5.1 Design and Materials	34
5.2 Plant Palette	39
5.3 Signage Strategy	40

Document Control				
Date	Revision Number	Revision Details	Issued	Approved
08.05.23	A	Draft for Review	PS	TSC
28.06.23	B	Final Draft	PS	TSC

Introduction

Pottsville is located at the southern end of the celebrated Tweed Coast. Like most of the Tweed's coastal towns and villages, Pottsville has experienced steady increases in both permanent and tourist population in the past 20 years. These increases have resulted in changing demographics and changing demand for public open space.

The Pottsville community is fortunate it has managed to retain its village character and identity. The village centre has also retained its generous provision of well-located public open spaces and recreation facilities. Its key open space provides the growing village centre with an invaluable sense of charm and spaciousness.

The draft Pottsville Open Space Masterplan presents the vision and design strategies for six of Pottsville's central open spaces including:

- 1. **Pottsville Environment Park/Centre (Environment Park)**
- 2. **Ambrose Brown Park**
- 3. **ANZAC Park**
- 4. **Pottsville RSL Memorial Park (Pottsville Oval)**
- 5. **Philip St Reserve**
- 6. **Hardy Park North**

This plan incorporates mostly Council managed Crown land. Pottsville Oval is part Crown land owned by the State government, and part Council managed Crown land. Hardy Park North is community land managed by Council.

The open spaces fall within the traditional country of the Bundjalung Nation and are all significant aboriginal sites with both cultural and environmental value.

Why a Pottsville Open Space Masterplan?
This masterplan is a long-term vision for how Pottsville's central open spaces are protected and or developed into the future as the area grows and changes over time.

The master planning process has been informed by responses to a community survey and feedback received from Pottsville's children and youth and engagement with key stakeholders. We have engaged a community working group of key community representatives, Council's Aboriginal Advisory Committee and Equal Access & Advisory Committee and Council staff to help create a well-informed design that caters to a wide variety of community needs and uses.

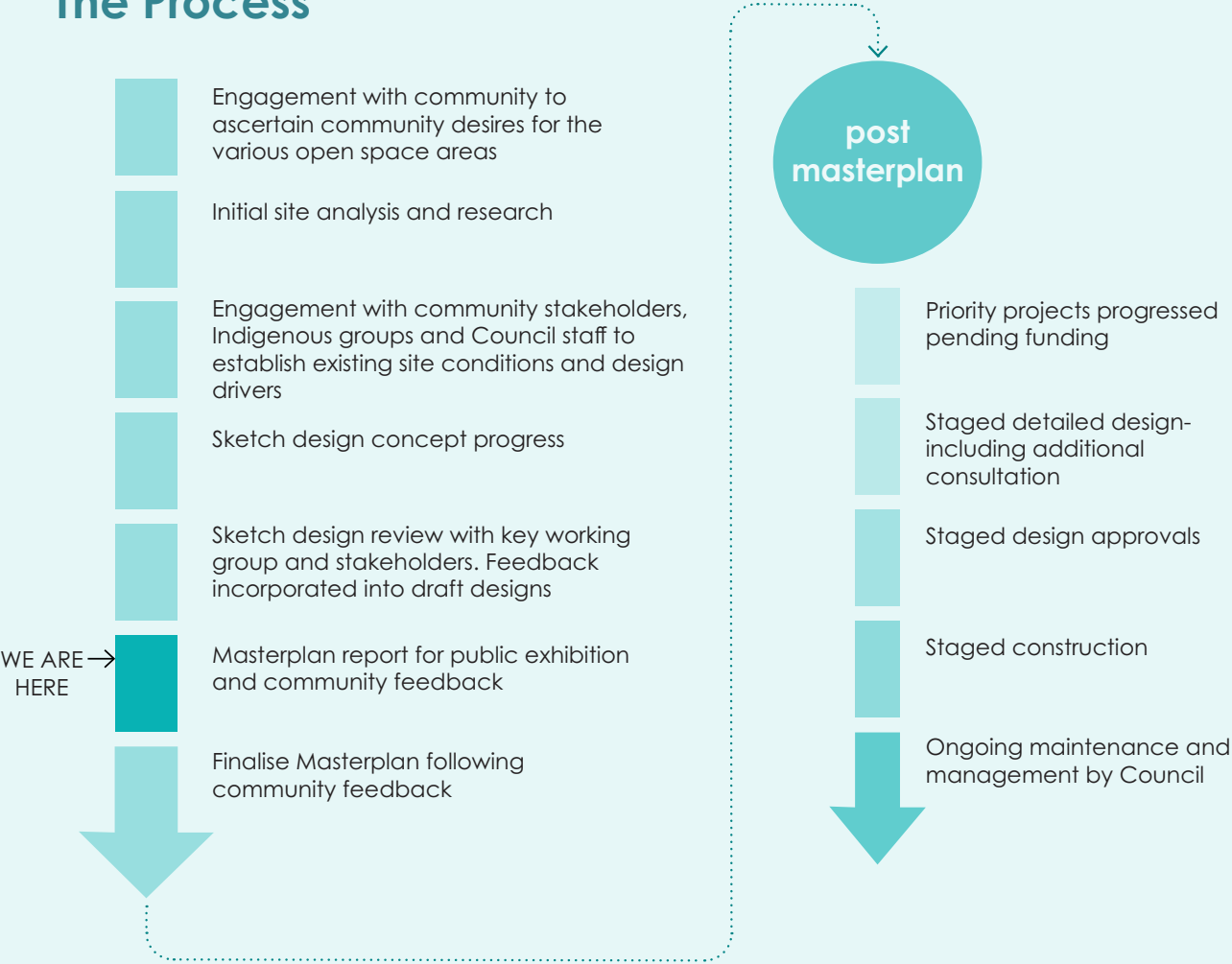
Establishing a shared vision for Pottsville's central open spaces will help protect and enhance the existing open spaces, the natural, cultural and historic values and help to meet existing and future community needs.

This masterplan has also been informed by Council's Community Strategic Plan (2022-2032), which identifies the priorities and aspirations of the Tweed community.

Further, the development of this masterplan is a high priority action in Council's Open Space Strategy (2019-2029). It is the Open Space Strategy that informs the scale of open space development and provision of recreation facilities across Tweed, from regional through to local open space and facilities. Council is also well advanced in it's development of the Sport & Active Recreation Strategy. This strategic planning has informed the nature and scale of open space development and recreation facilities proposed in this masterplan.

The masterplan will be delivered in stages. Council will seek funding of the delivery of future stages of the masterplan.

The Process



Vision

The plan's vision seeks to protect and enhance environmental, cultural, and open space values with a focus on community and retaining Pottsville's village character and identity.

Master Plan Principles




DRAFT

Pottsville


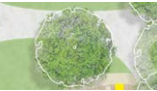







4 The Plan

4.1 Proposal

MASTERPLAN KEY PLAN

 Refer to detail plans for additional information

KEY

-  Existing tree to be retained
-  Proposed tree
-  Proposed concrete path
-  Proposed gravel path
-  Asphalt paths
-  Turf
-  Planting area
-  Shelters- picnic and BBQ
-  Car park



4.2 Environment Park/Centre

1. Formalised and improved accessible path connecting the Environment Centre to the wider Pottsville open space network (including the incorporation of new interpretive and wayfinding signage)
2. Existing asphalt path with new interpretive and way finding signage
3. Existing bridge to be retained and renewed
4. Environment Centre building surrounds works. Refer to page 12
5. Existing gravel paths retained (including the incorporation of new interpretive and way finding signage)
6. Existing path network repaired

NOTE:

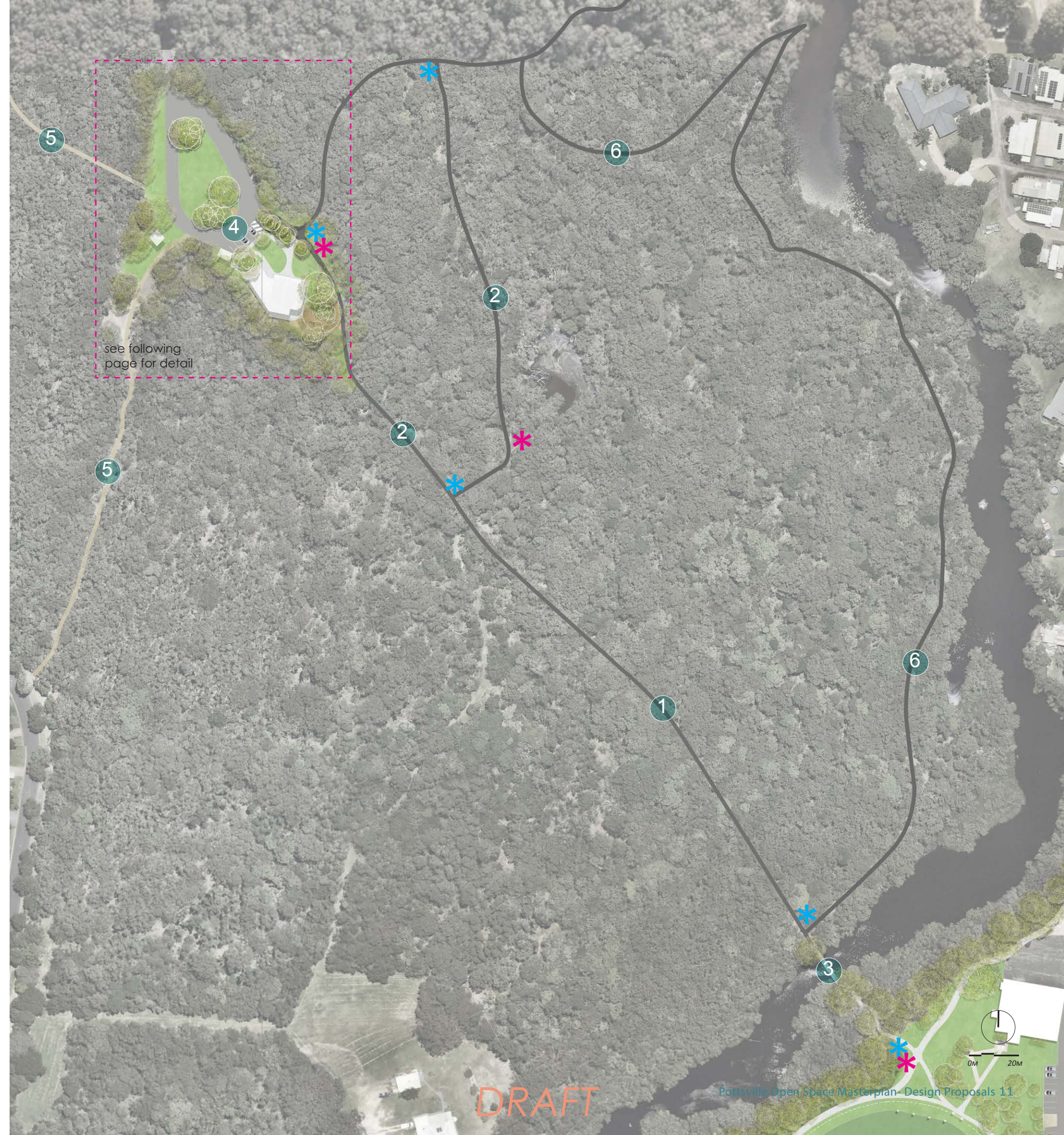
Bike racks/bins and water fountains to be considered in detail phase

Entire site drainage strategy to be considered in detail phase

* Interpretive signage (cultural and environmental)

* Wayfinding signage

For background and consideration information please refer to *Pottsville Open Space Masterplan- Background & Analysis* document.



4.2 Environment Park/ Centre Access and activation



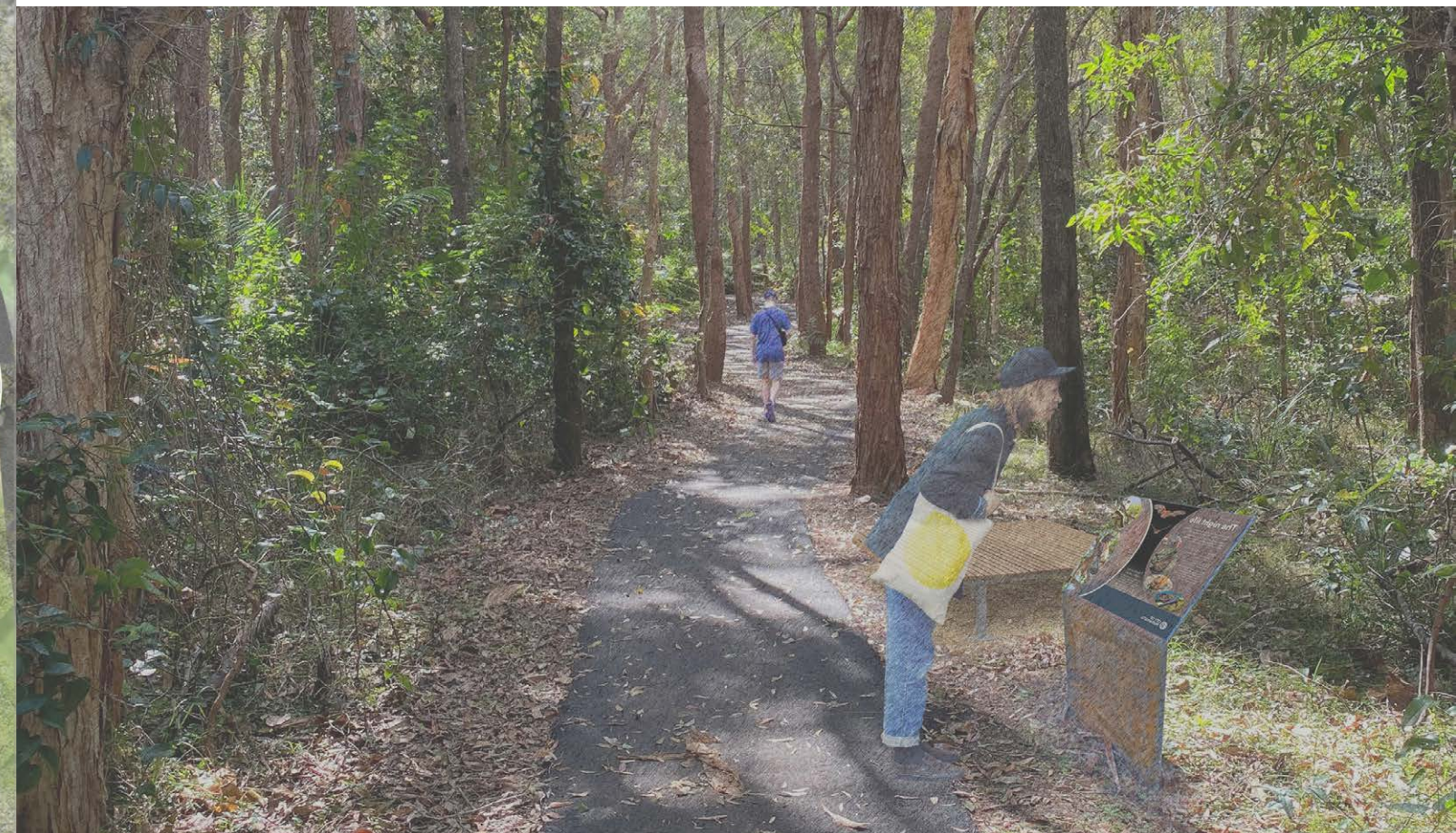
1. Accessible car parking for improved accessibility to Environment Centre
2. Accessible concrete pathway connecting accessible parking to building entrance and pathway network
3. Existing car parks formalised at entry
4. Existing map shelter to be retained including environmental and wayfinding information
5. Existing stone feature to be retained
6. Existing asphalt path connecting the Environment Centre to the wider Pottsville open space network
7. Small scale nature play under the existing trees

8. Picnic table and seating
9. Existing paths to be retained
10. Existing furniture to be retained
11. Activate building for community use

NOTE:

Bike racks/bins and water fountains to be considered in detail phase

- * Interpretive signage (cultural and environmental)
- * Wayfinding signage

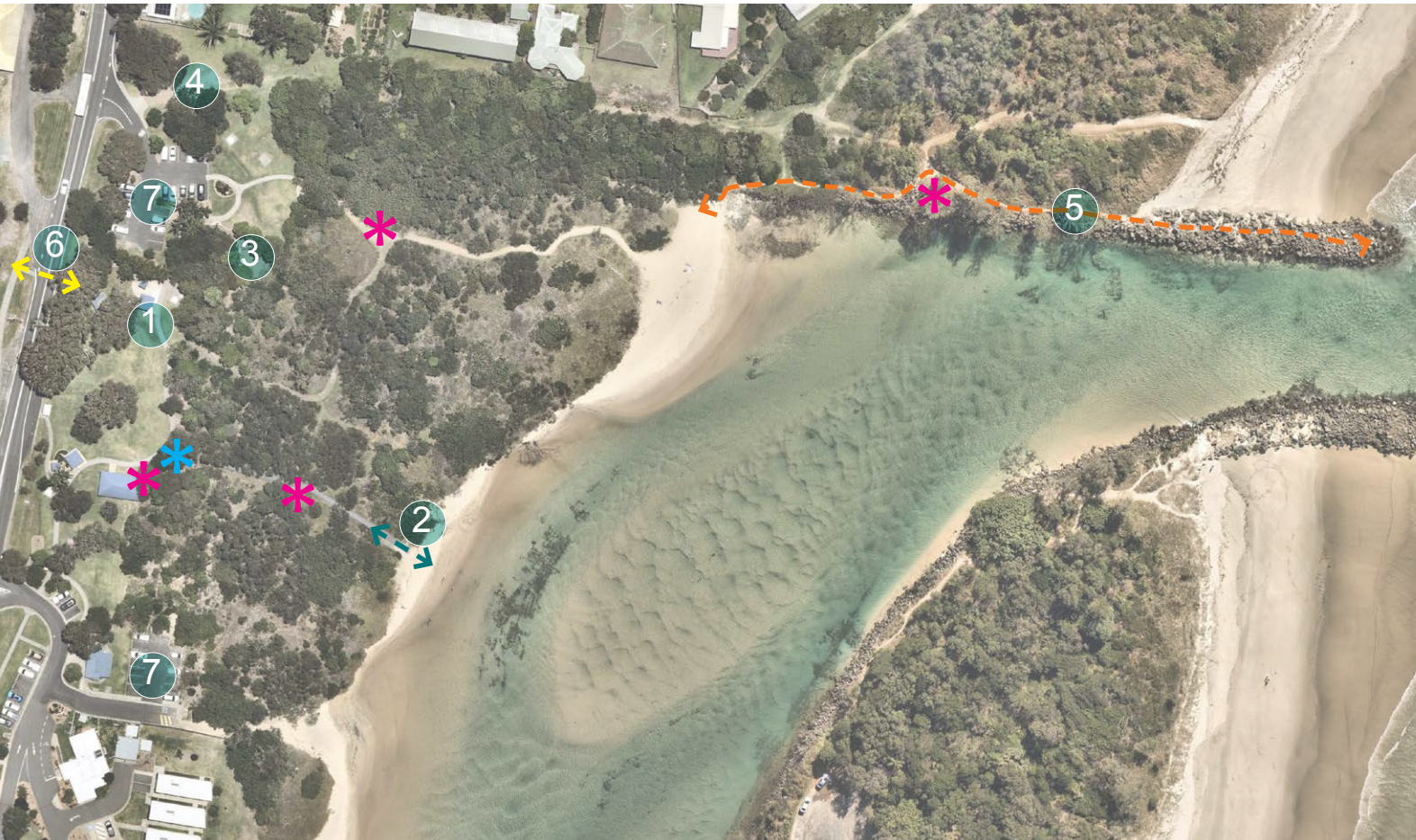


Indicative perspective- illustrating proposed new cultural and environmental interpretive signage positioned alongside paths with informed seating opportunities.

DRAFT

4.3 Ambrose Brown Park

For background and consideration information please refer to Pottsville Open Space Masterplan-Background & Analysis document.



The below points are recommendations of how to improve on the already functioning space.

1. Relocation of bins to adjacent pathway for accessibility
2. Reconstruct accessible entrance to creek area with ramp
3. Proposed future upgrade for an accessible play feature to be considered once existing play area is at end of life. NOTE - main nature play activation in village centre proposed for Philip Street Reserve
4. Investigate informal parking zone with possible potential to be formalised in the future
5. Future path upgrades to manage erosion- see indicative perspective (right)
6. Investigate best practice to improve safety, wildlife and accessible crossing to Tweed Coast Rd along with pedestrian refuge island. Refer to following pages
7. Investigate timed parking as a trial

NOTE:

Bike racks/bins and water fountains to be considered in detail phase

Entire site drainage strategy to be considered in detail phase

* Interpretive signage (cultural and environmental)

* Wayfinding signage



4.4 Pottsville RSL Memorial Park

1. Existing Memorial area to be retained as requested by representatives of the Pottsville District RSL sub-branch
2. Improved car park to Community Hall with formalised surface treatment and line marking including designated and marked shared path to eastern side. Bollards installed to edge of car park
3. Pottsville Oval retained as a sports field to accommodate informal and formal sporting. Oval fence to be upgraded with minor realignments to accommodate pathways and improved circulation. Several additional small openings in the fence are proposed enabling more informal access points
4. Barrier fence and associated landscaping between footpath and road for improved safety with consideration of wildlife crossing in selected areas
5. New concrete pathway network to improve pedestrian and cycling connectivity and accessibility creating a periphery loop around the oval
6. Investigate drainage to oval edges- concrete invert and reshaping playing surface proposed for southern end to manage standing water issues
7. Skate park and scooter area
8. Improved and extended planting area with low height plants for passive surveillance
9. Existing trees retained
10. Existing car park to be retained
11. Potential multi use clubhouse along with shade, plaza and informal seating. Accessible amenities
12. Improved native vegetation edge to west of footpath
13. Additional native trees planted to near of club house for informal picnic area
14. Safety improvements to pedestrian crossing points of Tweed Coast Road and Coronation Avenue with new pedestrian refuge islands
15. Retained historical gates
16. Rear car park of community hall building retained- potential to formalise car parking areas
17. Potential location for pump track /biking facility (approximate area: 428m²). Consideration: Encroachment on Environment Park vegetation and wildlife, and this is a flood affected area with storm water drainage issues. Council is also currently investigating other locations within and outside the village centre. Please see Philip Street Reserve page and biking facility page

NOTE:

Bike racks/bins and water fountains to be considered in detail phase

Entire site drainage strategy to be considered in detail phase

* Interpretive signage (cultural and environmental)

* Wayfinding signage

For background and consideration information please refer to Pottsville Open Space Masterplan-Background & Analysis document.



4.4 Pottsville RSL Memorial Park

southern activation zone



1. New concrete pedestrian path linking to the Environment Park, the ANZAC park and Pottsville Community Hall, and northern residential areas
2. Potential multi use clubhouse along with shade, plaza and informal seating. Accessible amenities
3. Sandstone retaining wall for informal seating
4. Investigate concrete invert drain to oval edge fence to manage standing water issues
5. Skate and scooter plaza area with varying surface finishes, areas of permeable pavement, ramps, obstacles and planting
6. Grass bank for oval viewing grading up to skate park
7. Upgraded fence to match existing white

- historical field fence. Additional breaks in fence to allow for casual circulation
8. Improved crossing to Coronation Avenue with pedestrian refuge island
9. Fence barrier between footpath and road with amenity planting
10. Seating walls
11. Minor path alignment adjustments to accommodate activity zone

NOTE:

Bike racks/bins and water fountains to be considered in detail phase

Entire site drainage strategy to be considered in detail phase

* Interpretive signage (cultural and environmental)

* Wayfinding signage



Indicative perspective- park additions shown include skate and scooter park elements, seating, new circulation paths and additional amenity planting

DRAFT

4.4 Pottsville RSL Memorial Park

Western edge



Indicative perspective- park improvements shown include proposed new pedestrian and cycle path to west of Pottsville Oval, drainage improvements, additional tree plantings, sandstone retaining walls and seating to edge of path and club house area. The white sports field fence is proposed to be upgraded to match the existing historical field fence.

4.5 Philip Street Reserve

1. Extended formalised parking with additional 4 car park spaces and allocated accessible parking spaces
2. Flexible open space retained for events, community markets and casual use
3. New concrete pathway network to improve pedestrian connectivity and accessibility
4. Increased tree planting for shade and visual amenity
5. Turn around area added to the southern end of Philip Street
6. Planting area including revegetation works with existing trees and native vegetation retained
7. Improved pedestrian safety at Coronation Avenue crossing with pedestrian refuge island. Existing path connection closest to the roundabout to be removed.
8. Nature and adventure play area with proposed feature play piece and informal play pathways through gardens and across drainage swale. Refer next page.
9. New shelters with BBQ and picnic facilities
10. Existing outdoor fitness equipment to be retained
11. New path linking into the park and the Philip Street commercial zone with pedestrian bridge over swale
12. Pedestrian refuge for a new crossing point and circulation link to the existing path over the bridge- improving safety and connectivity
13. Aesthetically improved drainage with swale planted and rock lined. Storm water storage areas extended in some locations through the use of stone retaining and landscape design to improve wildlife refuge habitat
14. Investigate minor adjustments to bus shelter (push back from kerb) to improve safety and accessibility
15. Potential location for pump track / biking facility (approximate area: 296m²) Consideration: A biking facility would reduce play area as well as picnic area. This is a flood affected area with storm water drainage issues. Both upgrades (play area and/or bike facility) reduces market area size within the park. Council is also currently investigating other locations within and outside the village centre. Please see Pottsville RSL Memorial Oval page and biking facility page
16. Investigate upgrades to toilets for accessibility and public use in consultation with the Pottsville Beach Neighbourhood Centre

NOTE:

Bike racks/bins and water fountains to be considered in detail phase

Entire site drainage strategy to be considered in detail phase

* Interpretive signage (cultural and environmental)

* Wayfinding signage

For background and consideration information please refer to Pottsville Open Space Masterplan- Background & Analysis document.



4.5 Philip Street Reserve



Indicative perspective- park improvements shown include adventure and nature play additions, new circulation paths, new picnic and BBQ shelters, naturalised drainage swale, and retention of flexible open space for community markets, events and casual use.

1. Existing concrete pathways
2. Bridge over drainage swale
3. New tree planting for shade and visual amenity
4. New paths for improved connectivity and accessibility
5. Informal decomposed granite pathway
6. Picnic setting
7. Shelters with picnic tables and BBQ facilities
8. Existing gym and outdoor fitness equipment to be retained
9. Nature and adventure play area with proposed feature play piece and informal play pathways through gardens and across drainage swale
10. Rock lined swale to existing drainage swale alignment for storm water filtration and storage and improved wildlife refuge habitat

11. Pedestrian refuge for a new crossing point and circulation link to the existing path over the bridge- improving safety and connectivity
12. Potential location for pump track /biking facility (approximate area: 296m²)
13. Investigate upgrades to toilets for accessibility and public use in consultation with the Pottsville Beach Neighbourhood Centre

NOTE:

Bike racks/bins and water fountains to be considered in detail phase
Entire site drainage strategy to be considered in detail phase

- * Interpretive signage (cultural and environmental)
* Wayfinding signage



Consideration: A biking facility would reduce play area as well as picnic area. This is a flood affected area with storm water drainage issues. Both upgrades (play area and/or bike facility reduces market area size within the park. Council is also currently investigating other locations within and outside the village centre. Please see Pottsville RSL Memorial Oval page and biking facility page.

DRAFT

4.6 Hardy Park North

1. Existing concrete pathway- extend to the south in future
2. Increased tree planting for shade and visual amenity
3. Angle parking along kerb with two accessible car parking bays and accessible pathway
4. Resurfaced multi court accommodating a netball court, half basketball court and handball
5. Picnic hub including picnic setting, BBQs, native planting and path links. Refer to next page.
6. Creek access and seating node with viewing deck, stairs and ramp to creek- existing shelter in this location to be relocated. Refer to next page.
7. Retain existing open grass parkland with existing path linking the north of the park to the south.
8. Existing creek access.
9. Existing swing set to be removed in future. New nature play in Philip Street meets supply demand of southern residents
10. Option for creek access. Further investigations in design phase required.

NOTE:

Bike racks/bins and water fountains to be considered in detail phase

Entire site drainage strategy to be considered in detail phase

* Interpretive signage (cultural and environmental)



For background and consideration information please refer to Pottsville Open Space Masterplan-Background & Analysis document.

4.6 Hardy Park North



Indicative perspective- park improvements shown include relocated and additional shelter, accessible path linkages, additional angled parking along street edge.

1. Existing concrete pathway nom. 2.5m wide

2. Additional trees to create shaded open space / picnic areas

3. Angle parking along kerb

4. Accessible parking spaces

5. Accessible pathway to accessibility parking

6. Resurfaced multi court accommodating a netball court, half basketball court and handball

7. Picnic hub

8. Existing shelter relocated to north of court (including picnic setting) with view to creek
9. Small shelter with table and seating

10. Existing shelter to be retained

11. Accessible path to view creek

12. Viewing deck with stairs to creek

13. Platform seating and bench seating

14. Option for creek access. Further investigations in design phase required.
- NOTE:

Bike racks/bins and water fountains to be considered in detail phase

Entire site drainage strategy to be considered in detail phase

* Interpretive signage (cultural and environmental)



4.7 Biking facility

Pump track/biking facility investigation

PUMP TRACK INVESTIGATION LOCATIONS

Investigation of a suitable pump track / biking facility is being undertaken with the following sites considered:

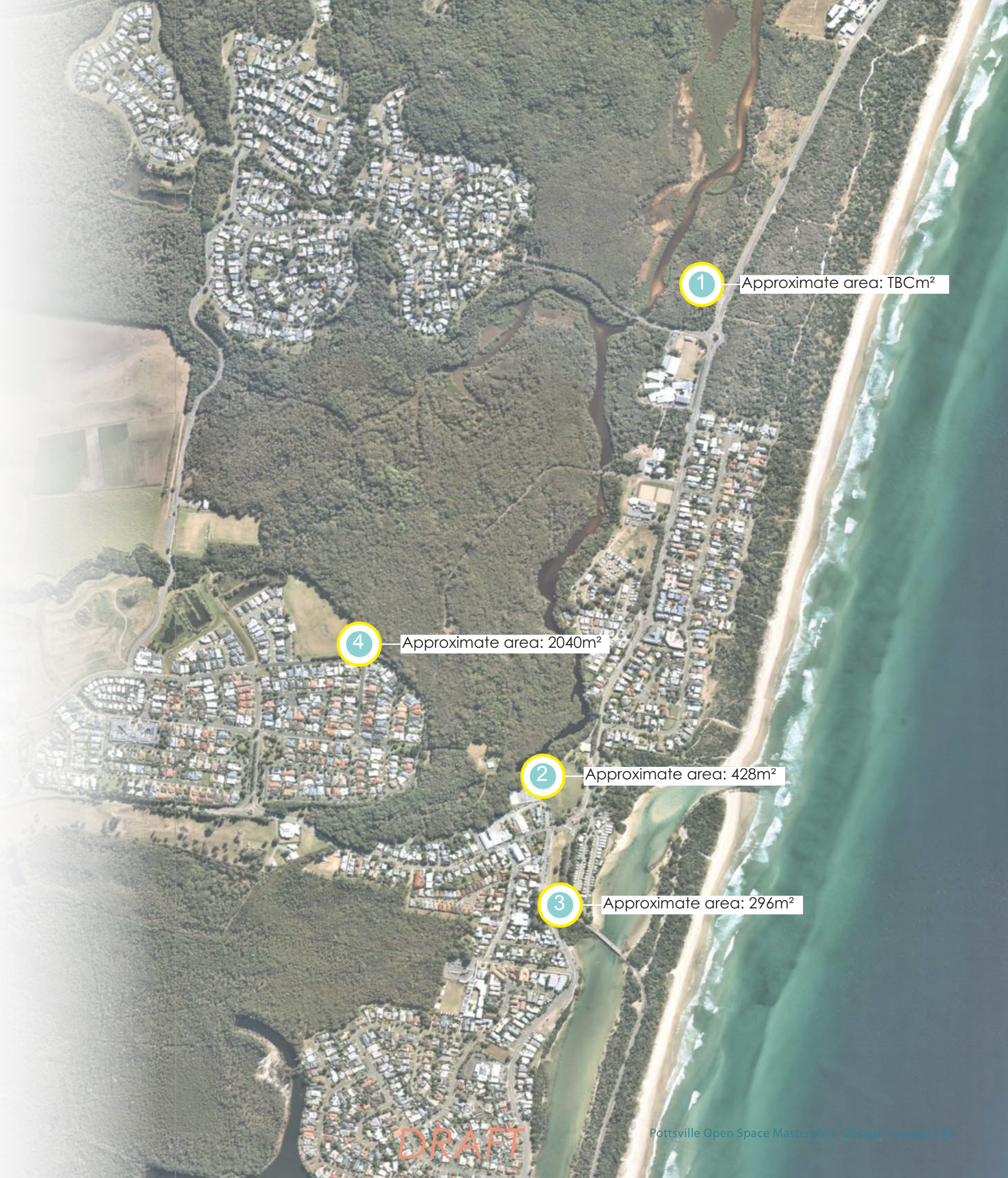
1. Tweed Coast Road – north of Cudgera Ave (currently being assessed, detailed location TBC)
2. Pottsville Oval - northern side
3. Philip Street Reserve – southern end
4. Seabreeze – south, eastern side

CONSIDERATIONS

Several locations for a pump track / biking facility are being investigated, with considerations at each location:

- environment and wildlife impact
- residential impact
- flood affected and storm water drainage areas
- existing/proposed features
- preference of existing users
- access
- safety
- viable size
- potential maintenance access

Investigations are still underway. A facility location to be determined which is fit for purpose within the vision and objectives of this plan – community, culture and environment.





5

Palette- character, materials, plants and signage

DRAFT

5.1 Design & Materials



HARD SURFACES
Plain grey concrete, exposed aggregate concrete, decomposed granite/compressed gravel



Asphalt paths in environment park areas



FEATURE PAVEMENTS
Sandblasted patterns and artworks, pavers



PARK SHELTERS & BBQ's
Usable facilities with hard wearing and low maintenance materials



PICNIC TABLES, SEATS & BIKE RACKS
Simple hard wearing, long lasting, and low maintenance materials





INFORMAL SEATS AND PLAY PLATFORMS
Large format and flexible furniture elements- natural materials



BARRIER FENCE
Located within planting area



BOARD WALK MATERIALS AND EQUITABLE CREEK AND BEACH ACCESS
Providing access to the water for all, constructed from simple hard wearing, long lasting, and low maintenance materials



ADVENTURE AND NATURE PLAY EXAMPLES



NETBALL COURT UPGRADES
Example treatments



SKATE / SCOOTER ACTIVATION
Example treatments



ARTWORK BY AMOK ISLAND



ARTWORK BY NASTIA GLADUSHCHENKO

BUILDING TREATMENTS AND PUBLIC ART
Example treatments to building facade for activation and incorporation of cultural heritage- potential for such treatments on the Environment Centre

5.2 Plant Palette

RIPARIAN PLANTING

- Blackwood
- River Oak
- Swamp Oak
- Broad-leaved Paperbark Tree
- Acacia melanoxylon*
- Casuarina cunninghamiana*
- Casuarina glauca*
- Melaleuca quinquenervia*

GENERAL PLANTING

- Midgem berry
- Wallum banksia
- Coastal Cushion
- Swamp banksia
- Coastal banksia
- Roller coaster
- Tall sedge
- Pigface
- Yellow buttons
- Knobby club-rush
- Grevillea
- Cottonwood
- Matt rush
- Verday
- Lime tuff
- Swamp Box
- Thyme Honey-Myrtle
- Creeping boobialla
- Rice paper flower
- Blue tussock grass
- Fan Flower
- Coastal rosemary
- Coastal rosemary
- Golden everlasting daisy
- Austromyrtus dulcis*
- Banksia aemula*
- Banksia spinulosa 'coastal cushion'*
- Banksia robur*
- Banksia integrifolia*
- Banksia integrifolia 'roller coaster'*
- Carex appressa*
- Carpobrotus glaucescens*
- Chrysocephalum apiculatum*
- Ficinia nodosa*
- Grevillea 'Lady O'*
- Hibiscus tiliaceus*
- Lomandra hystrix*
- Lomandra verday*
- Lomandra 'lime tuff'*
- Lophostemon suaveolens*
- Melaleuca thymifolia*
- Myoporum parvifolium*
- Ozothamnus diosmifolius*
- Poa sieberiana*
- Scaevola albida*
- Westringia fruticosa 'zena'*
- Westringia fruticosa 'flat and fruity'*
- Xerochrysum bracteatum*

KOALA HABITAT AND FOOD TREES

- Brush Box
- Tallowood
- Grey Gum
- Forest Red Gum
- Broad-leaved Paperbark Tree
- Lophostemon confertus*
- Eucalyptus microcorys*
- Eucalyptus propinqua*
- Eucalyptus tereticornis*
- Melaleuca quinquenervia*

Note: This planting list is not exhaustive and is to be used as an indicative guide through detail design.



5.3 Signage Strategy

WAYFINDING & INTERPRETATION
There are opportunities to introduce improved wayfinding to Pottsville- this will assist users in understanding the facilities on offer, the distances and the linkages.

Cultural, heritage and environmental interpretive elements can also be increased and improved to ensure the community and visitors can fully appreciate the site, its history, and the environment

- * INTERPRETIVE SIGNAGE (CULTURAL AND ENVIRONMENT)
- * WAYFINDING SIGNAGE



WAYFINDING & INTERPRETATION EXAMPLES
Linking the separate park areas together and providing education opportunities



DRAFT



TWEED
SHIRE COUNCIL