



## Who participated?



A broad range of park users who use the park at different times of the day and week; families, dog owners, cyclists and casual users.

Around **800** people

actively participated in the first stage of consultation!

## How did they participate?



**1,900** visitors  
Have Your Say webpage



**18,000** reached via social media



**167** people online survey



**Over 250** people drop-in sessions



**151** people interactive online map

Love the amount of trees and bushland still in the park

### Open space and sense of community



Improved and additional toilet facilities are needed and should consider all user needs and improved surveillance



### Amenity upgrades and improved facilities

# What you said

There is support for an all abilities outdoor gym, learner bicycle circuit and obstacles, and cycle loop.

### Fitness and local connections



### Play and skate



An all ages play area, incorporating natural elements, adventure equipment, soft fall and shaded areas would be great

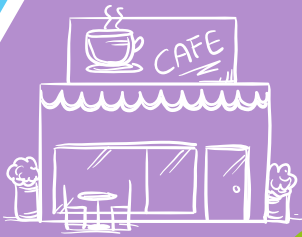
### Maintaining the variety



The off-leash dog area is well used by locals and visitors to the area. They value the open space and opportunities to socialise



### Places to gather



Would love to see a café in the park



## Next steps

We are now considering all community feedback to prepare a draft Master Plan for Thomas H Halton park. The draft plan is expected to be available for public comment in early 2017, following recommendation from Council.

Thank you for your feedback! Register to keep updated on [www.haveyoursaylakemac.com.au](http://www.haveyoursaylakemac.com.au)