

## Former Gaol Precinct

**Heritage Place:** Former Gaol Precinct

**HO Reference:** TBA

**Date updated:** 1 November 2023

**Address:** 18-30 Goldsmith Street, 5-17 Peel Street, 21-35 & 24-36 Barkly Street, 92-102 Inkerman Street, Maryborough



Figure 1. Former Gaol, looking northwest on Inkerman Street.

**Item Group:** Law Enforcement & Residential Buildings

**Key Theme:** Building towns, cities and the garden state

**Item Type:** Gaol/Lock-up & Residential Precinct

**Key Sub-theme:** Making regional centres

**Designer:** Unknown

**Construction:** 1880s-1952

**Builder:** Unknown

**Style:** Victorian (Italianate), Interwar (Arts and Crafts, Bungalow, Old English, Spanish Mission), Post-war (Streamline Moderne)

**Significance Level:** Local

- |  |  |  |
|--|--|--|
| <b>Controls:</b> <input type="radio"/> External paint controls | <input type="radio"/> Internal alteration controls | <input type="radio"/> Tree controls                                |
| <input type="radio"/> Included on Victorian Heritage Register  | <input type="radio"/> Incorporated Plans           | <input checked="" type="radio"/> Outbuildings and fence not exempt |
| <input type="radio"/> Prohibited uses may be permitted         | <input type="radio"/> Aboriginal Heritage Place    | <input type="radio"/> Solar energy system controls                 |

## Curtilage



Figure 2. Aerial map showing boundary of Former Gaol Precinct.

## Statement of Significance

### *What is significant?*

The Former Gaol Precinct, generally bounded by Goldsmith Street, Peel Street, Raglan Street and Inkerman Street, and comprising a series of residential properties, along with remnant buildings of the former Maryborough Gaol, is locally significant. The precinct comprises significant, contributory, and non-contributory graded properties.

Significant properties include:

- 94 Inkerman Street, Maryborough;
- 96 Inkerman Street, Maryborough;
- 20 Goldsmith Street, Maryborough;
- 21 Barkly Street, Maryborough; and
- 25 Barkly Street, Maryborough

Refer to the grading table for the full list of properties.

Character elements that contribute to the significance of the precinct include:

- Wide, open streetscapes with concrete kerbing, footpaths and crossovers;
- Expansive front setbacks with landscaped front lawns and gardens;
- Highly intact residences including hipped, gabled, or parapeted roof forms featuring slate or terracotta Cordova tiling, and detailing such as face brick chimneys shaped timber elements such as brackets, finials and bargeboards, cast iron lacework, half-timbered open-gable detailing, exposed masonry fenestration detailing, and shaped gable parapets with arched openings;
- The general uniformity of building setbacks and heights;
- Original or sympathetic front fences of timber or masonry construction, including 21 Barkly Street, 23 Barkly Street, 25 Barkly Street, 31 Barkly Street, 35 Barkly Street, 17 Peel Street and 26 Barkly Street. Of specific significance is the bluestone and sandstone brick fence 100 Inkerman Street, constructed with stone from the former Gaol;
- The predominance of eclectic interwar styles, including Bungalow, Arts and Crafts, Spanish Mission and Old English, illustrating the development of the precinct following the subdivision of the Gaol grounds in the early twentieth century, as well as the stylistic eclecticism of the 1930s period;
- High quality 1930s residences along Barkly Street which comprise the township's only row of 1930s dwellings, illustrating the period of homebuilding in the early 1930s as a result of economic prosperity stemming from industrialisation;
- The use of building materials derived from the former Maryborough Gaol buildings in the construction of the 1930s residences, as is the case at 25 Barkly Street;
- Remnant Victorian era development opposite the former Maryborough Gaol at 92 Inkerman Street, illustrating earlier nineteenth century development in the area;
- The visually prominent remnant buildings associated with the Former Maryborough Gaol, including the front offices and quarters buildings at 94 and 96 Inkerman Street; and
- The Streamline Moderne style residence at 20 Goldsmith Street (including its substantial allotment and grounds) as one of the few examples within Maryborough.

### *How is it significant?*

The Former Gaol Precinct is of local historical and aesthetic significance to the Central Victorian Goldfields.

### *Why is it significant?*

The Former Gaol Precinct is historically significant for its association with the Former Maryborough Gaol, a large complex of bluestone buildings that was established in 1861 on the town's foothills following campaigning from the Maryborough community and the newly formed Maryborough Town Council. The establishment of the Gaol is indicative of the size and status of the town during the Gold Rush, and also forms part of a larger phase of prison construction in regional Victoria during the mid nineteenth century. The remnant front offices and quarters buildings not only form a tangible link to Maryborough's role in Victoria's penal system, but also provides insight into the administration of the penal system during the 1860s. (Criterion A)

The Former Gaol Precinct is historically significant as an intact collection of high-quality residences primarily constructed during the interwar period following the closure of the Former Maryborough Gaol in 1914. Predominantly developed during the early 1930s during a period of homebuilding stemming from industrialisation, these houses not only illustrate the town's continued prosperity in the aftermath of the Gold Rush, but also the success of its emergent manufacturing sector as the economy transitioned away from goldmining. The remnant Victorian residence at 92 Inkerman Street as an example of earlier nineteenth century development in the area prior to the closure of the Maryborough Gaol. (Criterion A)

The Former Gaol Precinct is of aesthetic significance as an intact group of high-quality and visually cohesive interwar residences, interspersed with sympathetic Victorian style development. Although primarily designed a mixture of eclectic interwar styles, including Arts and Crafts, Spanish Mission and Old English, homogeneity is achieved through shared or related architectural elements and proportions, such as hipped or gabled roof forms, brick masonry or weatherboard construction, uniform setbacks and heights, timber or brick front fences, grouped timber framed stained glass windows, verandahs supported by masonry piers, prominent arches and gables ornamented with face brick detailing or half-timbering. The 1952 Streamline Moderne residence at 20 Goldsmith Street also contributes to the precinct's aesthetic significance as a visually discernible example of a Moderne style residence set on a substantial allotment. (Criterion E)

## HERCON Criteria Assessment

A	<i>Importance to the course, or pattern of our cultural or natural history.</i>	The Former Gaol Precinct is historically significant for its association with the Former Maryborough Gaol, a large complex of bluestone buildings that was established in 1861 on the town's foothills following campaigning from the Maryborough community and the newly formed Maryborough Town Council. The establishment of the Gaol is indicative of the size and status of the town during the Gold Rush, and also forms part of a larger
---	---	---

		<p>phase of prison construction in regional Victoria during the mid nineteenth century. The remnant front offices and quarters buildings not only form a tangible link to Maryborough's role in Victoria's penal system, but also provides insight into the administration of the penal system during the 1860s.</p> <p>The Former Gaol Precinct is historically significant as an intact collection of high-quality residences primarily constructed during the interwar period following the closure of the Former Maryborough Gaol in 1914. Predominantly developed during the early 1930s during a period of homebuilding stemming from industrialisation, these houses not only illustrate the town's continued prosperity in the aftermath of the Gold Rush, but also the success of its emergent manufacturing sector as the economy transitioned away from goldmining. The remnant Victorian residence at 92 Inkerman Street as an example of earlier nineteenth century development in the area prior to the closure of the Maryborough Gaol.</p>
B	<i>Possession of uncommon, rare or endangered aspects of our cultural or natural history.</i>	This place does not meet this criterion.
C	<i>Potential to yield information that will contribute to an understanding of our cultural or natural history.</i>	This place does not meet this criterion.
D	<i>Important in demonstrating the principal characteristics of a class of cultural or natural places or environments.</i>	This place does not meet this criterion.
E	<i>Importance in exhibiting particular aesthetic characteristics.</i>	<p>The Former Gaol Precinct is of aesthetic significance as an intact group of high-quality and visually cohesive interwar residences, interspersed with sympathetic Victorian style development. Although primarily designed a mixture of eclectic interwar styles, including Arts and Crafts, Spanish Mission and Old English, homogeneity is achieved through shared or related architectural elements and proportions, such as hipped or gabled roof forms, brick masonry or weatherboard construction, uniform setbacks and heights, timber or brick front fences, grouped timber framed stained glass</p>

		windows, verandahs supported by masonry piers, prominent arches and gables ornamented with face brick detailing or half-timbering. The 1952 Streamline Moderne residence at 20 Goldsmith Street also contributes to the precinct's aesthetic significance as a visually discernible example of a Moderne style residence set on a substantial allotment.
F	<i>Importance in demonstrating a high degree of creative or technical achievement at a particular period.</i>	This place does not meet this criterion.
G	<i>Strong or special association with a particular community or cultural group for social, cultural or spiritual reasons. This includes the significance of a place to Indigenous peoples as part of the continuing and developing cultural traditions.</i>	This place does not meet this criterion.
H	<i>Special association with the life or works of a person, or group of persons, of importance in our history.</i>	This place does not meet this criterion.
	<b>Significance level</b>	Local

## Description

### *Physical Analysis*

The Former Gaol Precinct occupies a rectangular extent of land and is bounded by Goldsmith Street to the northwest, Peel Street to the northeast, Inkerman Street to the southwest, and the rear of the properties along the south-eastern side of Barkly Street. Old Gaol Lane, Goldsmith Lane and Peel Lane dissect the area in addition to Barkly Street. The residential precinct largely occupies land formerly part of the Maryborough Gaol that operated from 1861 to 1914. Following the closure of the Gaol, subdivision and development of the land resulting in the present housing stock comprises largely of Interwar residences. The precinct is characterised with a wide, open streetscape and nature strips with concrete kerbing, footpaths, and crossovers. The nature strips are generally planted with a variety of interspersed street trees.



Figure 3. View northeast along Inkerman Street, Maryborough.



Figure 4. View southwest along Barkly Street, Maryborough.

Victorian style residences are situated on allotments to the southwestern side of the precinct. This includes 18 Goldsmith Street and 92 and 102 Inkerman Street. The residences present a simple, single fronted and single storey weatherboard clad residence with a symmetrically arranged front façade and a hipped roof. Other features characteristic of the style includes a return verandah, timber sash windows, face brick chimneys positioned symmetrically, shaped timber elements such as brackets, finials and bargeboards, and cast-iron lacework. With the exception of 92 Inkerman Street however, these residences were constructed during the interwar period and do not comprise original examples of early Victorian era dwellings.

94 and 96 Inkerman Street consists of the remaining Offices and Quarter's building which flanked the original entrance to the former Maryborough Gaol. The two storey masonry structures present a square massing, symmetrical single fronted façade, and hipped roof with slate tiles. The two structures are mostly identical except 94 includes a centred main entrance fronting Inkerman Street, while the front façade of 96 only consists of windows. The structures are finished with a harling with exposed stone blockwork to the base course and quoining. The timber sash windows, and main entrance door are also dressed with stone on the front façade.



Figure 5. 92 Inkerman Street, Maryborough.



Figure 6. 102 Inkerman Street, Maryborough.



Figure 7. Former Maryborough Gaol building at 96 Inkerman Street, Maryborough.



Figure 8. Former Maryborough Gaol building at 94 Inkerman Street, Maryborough.

Early Federation era residences within the precinct can be observed at 98 Inkerman Street, and 9, 11, 13, 15 and 17 Peel Street. Residences typically present open gable forms clad with weatherboard, sash window banks, timber shingle, and half-timbered detailing.



Figure 9. 17 Peel Street, Maryborough.



Figure 10. 9 Peel Street, Maryborough.

Interwar era residences with Arts and Crafts influences can be observed 23, 25, 26, 29 and 35 Barkly Street, presenting a layered open gable front façade, half-timbered gables, with a detailed use of render and exposed masonry to highlight fenestrations.



Figure 11. 26 Barkly Street, Maryborough.



Figure 12. 23 Barkly Street, Maryborough.



Figure 13. 29 Barkly Street, Maryborough.



Figure 14. 35 Barkly Street, Maryborough.

A residence with notable features along Inkerman Street can be observed at the Interwar Arts and Crafts style residence at 100 Inkerman Street for its use of bluestone and sandstone blocks in the front wall, likely constructed from material from the former gaol. The residence also includes a rear bluestone rubble open gable structure, likely formerly used as stables, accessible off Old Gaol Lane.



Figure 15. Bluestone rubble shed at the rear of 100 Inkerman Street as seen from the backyard of 98 Inkerman Street, Maryborough. *Source:* Realestate au <https://www.realestate.com.au/property/98-inkerman-st-maryborough-vic-3465>.



Figure 16. Bluestone and sandstone block front wall at 100 Inkerman Street, Maryborough.

Other notable Interwar era residences include Spanish Mission style residences at 21 and 31 Barkly Street and 5 Peel Street and an Interwar Moderne style residence at 20 Goldsmith Street. The Spanish Mission style is defined through the distinctly shaped gable parapet with arched openings and barley twist columns. Other characteristic elements of the style visible within the precinct include the use of roughcast render, terracotta Cordova tiles and sash windows. 20 Goldsmith Street represents the only Interwar Moderne example within the precinct. Set on a large block, the residence is defined through its form consisting of curved walls and windows with a flat parapet. Subtle detailing further accentuates the horizontal massing. The use of face blond brick at 20 Goldsmith Street, is typical to the Moderne style.



Figure 17. 21 Barkly Street, Maryborough.



Figure 18. Archdale, 5 Peel Street, Maryborough.



Figure 19. 20 Goldsmith Street, Maryborough.



Figure 20. 20 Goldsmith Street, Maryborough.  
Source: Google Maps, 2023.

The housing stock within the Precinct presents a diverse group of single-storey Interwar and Federation/Edwardian era residences, representing the development of the area following the closure and progressive demolition of the former Maryborough Gaol. Residences largely present a cohesive single storey form with hipped or gable roofs with varied detailing representative of the various stylistic trends of the period. Residences within the precinct generally present varied setbacks with low front fences or open front yards. Sympathetic front fences and walls typically consist of low brick walls to Interwar era residences and timber picket fences to Victorian and early Federation era residences.

There is minimal incursion of non-contributory Post-war austerity and contemporary residences. There are also limited examples of second storey, front garage, and carport additions that detract from the overall presentation of the precinct.

#### *Alterations and Additions*

- Non-contributory front wall or fence addition at 102 Inkerman Street.
- Non-contributory garage or carport visible along the front façade at 15 Peel Street 36 Barkly Street.

- Non-contributory rear extensions or second storey additions visible from the public domain at 7, 13 and 17 Peel Street, 92 and 98 Inkerman Street.
- Solar panels added to the front roof face at 18 Goldsmith Street and 98 Inkerman Street.
- Contemporary residential development at 30 Goldsmith Street.
- Non-contributory Post-war residential development at 36 Barkly Street and 24 Goldsmith Street.

## History

### *Historical context*

For thousands of years preceding European colonialism, the land and environmental surrounds presently known as Maryborough was home to the Dja Dja Wurrung peoples of the North-Western Kulin Nation. Dominated by wooded and hilly environments intersected by streams and valleys, the area would have provided them with an abundance of plant and animal resources integral to their way of life, including kangaroo grass, yam daisies (murrnong), possums and kangaroos. Meanwhile, the Dja Dja Wurrung also drew upon their knowledge of the land to establish complex rock wells that could take advantage of fresh and clean water (Osborn and DuBourg 2011, 15-16). The onset of colonialism not only saw the transformation of these landscapes, but also Dja Dja Wurrung deaths through violence and the introduction of diseases, and displacement through land dispossession and the establishment of an Aboriginal Protectorate Station in the nearby Franklinford area (Osborn and DuBourg 2011, 14). Despite desecration and loss following the onset of European colonisation, the rich cultural heritage of Traditional Owners is still evident in the suburb and its surrounds today, as can be seen in the Bully Gully rock wells and in the Carisbrook stone arrangements (Osborn and DuBourg 2011, 15-16, 18). Today, the Dja Dja Wurrung peoples continue to maintain an enduring connection to Country through continued resistance and passing down of Indigenous knowledge.

Settler colonialism in Maryborough was spurred by Major Mitchell's reports of Port Phillip's lush pastures suitable for grazing in 1836, which subsequently saw squatters transform the area into a sheep run by the 1840s (Osborn and DuBourg 2011, 40). The Simson brothers established Charlotte Plains Station near Carisbrook in 1840, while couple Edward Gittins Bucknall and Sarah Bucknall settled in Rodborough for pastoral pursuits by 1844 (Osborn and DuBourg 2011, 2; Jerry 1935).

The area's sparse pastoral character was transformed once more following the first colonial discovery of gold in the town in March 1853, which precipitated a flurry of migration to the area (Flett 1975). By 1854, the population of the Maryborough District was estimated at 25,000, and the town was consequently surveyed into allotments by W. A Taylor in 1855 (Osborn and DuBourg 2011, 30; Geelong Advertiser and Intelligencer 1855, 2). A burgeoning mining town, the main township comprised several hotels, shops, a hospital, police reserve, postal office, courthouse, bank, brewery, and recreation reserve by 1856 (Surveyor-General's Department 1856). Meanwhile, the miners themselves resided in designated camp reserves, including the main 'Second Camp Reserve' west of Clarendon Street (Surveyor-General's Department 1856). Compounding this landscape by the 1860s were also places associated with Chinese settlement in the area, including Chinese owned stores, cookshops and market gardens—however, these sites were primarily situated in Chinese encampments just outside of the main township, such as Chinaman's Camp and Mosquito Gully (Osborn and DuBourg 2011, 67; Maryborough and Dunolly Advertiser 1862, 2).



Figure 21. Extract from 1856 map of Maryborough (surveyed in 1855 by W. A. Taylor) showing Second Camp Reserve, commercial development along High Street and available allotments. Source: Gilks, E. 1856. *Township of Maryborough, County of Talbot*. Historical Plan Collection VPRS 8168/P0002, DIST17. Public Records Office Victoria. <https://prov.vic.gov.au/archive/58ADC7F8-F840-11E9-AE98-5FEB86214ED5?image=1>.

Although Maryborough continued to expand throughout the late nineteenth century, as evident in establishment of more ornate Victorian residences and civic facilities throughout the 1870s and 1880s, including the Italianate style Maryborough Post Office in 1876-77 (HO146/VHR 1754), Free Classical style Maryborough Town Hall in 1888 (HO174/VHR H2152), and the opening of the Queen Anne Revival style Maryborough Railway Station (HO134/VHR H1577) in 1892, growth ultimately stabilised by the 1910s due to a gradual decline in gold mining (The Australian Directory 1903; Osborn 1995, 126).

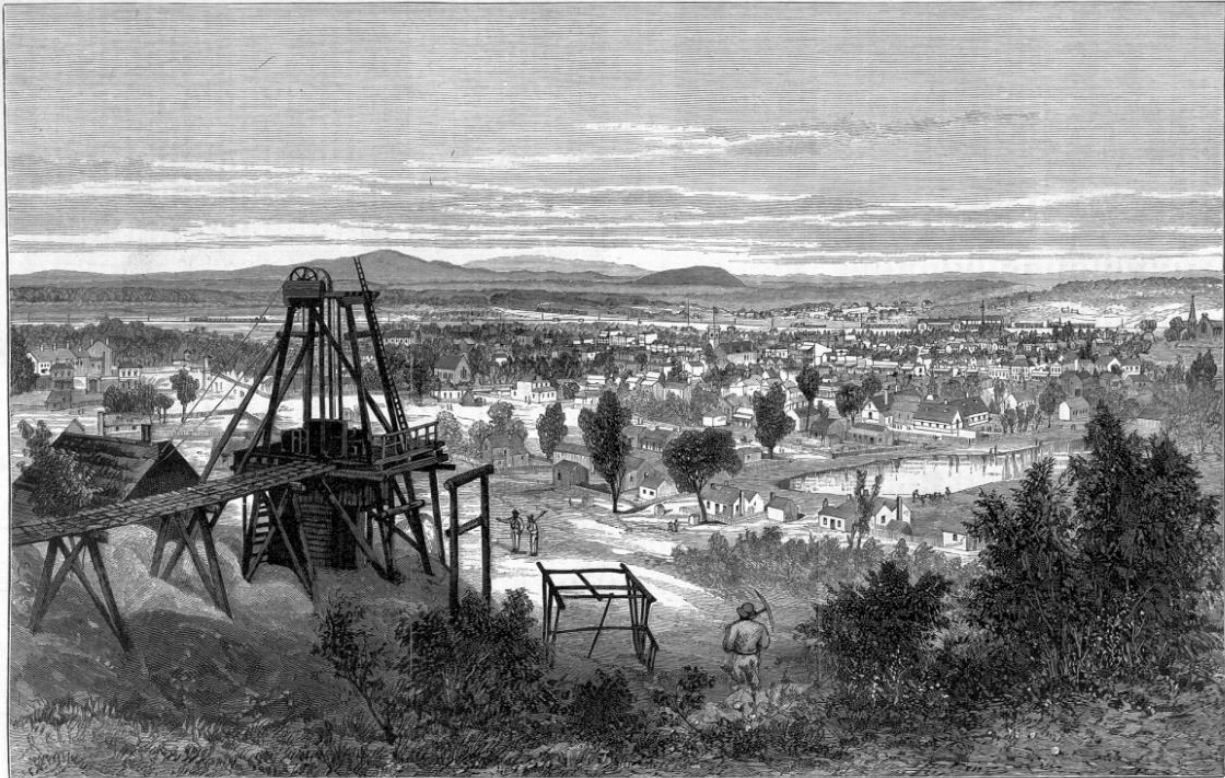


Figure 22. 1881 sketch of Maryborough township, looking south-west. *Source:* May, A & Alfred Martin Ebsworth. 1881. *Maryborough*. Print: wood engraving. Accession no. A/S22/10/81/340. State Library of Victoria. <http://handle.slv.vic.gov.au/10381/257854>.

The downturn in gold mining saw the town's economy transition into manufacturing by the 1920s, the most noted of which included the erection of the Maryborough Knitting Mills in 1924 (Osborn 1995, 196-198). The next decade also saw the advent of electrical power, the establishment of recreational facilities and the development of substantial interwar villas on the town's former gaol site bounded by Inkerman, Goldsmith, Peel and Barkly Streets, as can be seen at the fine Interwar Revival style dwellings at 21-23 Barkly Street (Osborn 1995, 264).

The last distinct phase of development in the suburb would take place in the post-war period, which saw major sewerage works and intense housing expansion in response to the town's ongoing housing shortage during the early 1950s (Osborn 1995, 132). Notably, a substantial portion of post-war housing developments comprised prefabricated timber houses manufactured by the Housing Commission factory in Carisbrook operated by W. Phelan and Sons Pty Ltd (The Argus 1944, 3; Construction 1947, 2). This wave of residential development reflected the continued prosperity of industry in the township, which was proclaimed as the 'Industrial Centre of the Midlands' by 1950 (The Herald 1950, 4). While Maryborough's manufacturing sector continued to expand until the end of the 1960s, its downturn from the 1970s onwards saw Maryborough turn to tourism as the main industry. Today, Maryborough's streetscapes reflect its multilayered history, with buildings ranging from grand Victorian era civic structures and Moderne style factories to post-war prefabricated residences.

### Place History

The Former Gaol Precinct is situated on land further north-west of the original 1855 colonial settlement area in Maryborough (Gilks 1856). Located adjacent to the designated Police Reserve and Market Reserve, the area, partially elevated on a hill, was designated as a site for the proposed Maryborough Gaol following lobbying by both the community and the newly formed Maryborough Town Council in 1858 (Osborn and DuBourg 2011, 96; *The Age* 1858, 4; *The Age* 1859, 5; *Maryborough and Dunolly Advertiser* 1859, 2). Construction took place between 1859 and 1860 on 6.25 acres of land bounded by Inkerman, Goldsmith, Peel and Barkly Streets at a cost of £21,000 (*Mount Alexander Mail* 1859, 5). It was subsequently opened in 1861 and the complex consisted of a

“massive bluestone building, just over the brow of the hill, to the left of the camp is the gaol itself, and forms a conspicuous object on approaching the township from almost any direction. It is oblong, and of considerable height, having the ground floor divided into compartments of cells of various sizes, storerooms...” (*Maryborough and Dunolly Advertiser* 1860, 2).

The gaol was used not only to detain prisoners across the northwestern region, but also to house the destitute, old, physically handicapped, homeless, or the severely ill (Osborn, 2004, 10-12). Although considered an improvement from the existing Maryborough lock-up and lauded in one 1862 newspaper account for its “effectual safe-keeping, no less than for the care of their health and even comfort to a certain degree”, the complex was nonetheless designed to punish and restrain prisoners (*Maryborough and Dunolly Advertiser* 1862, 2).

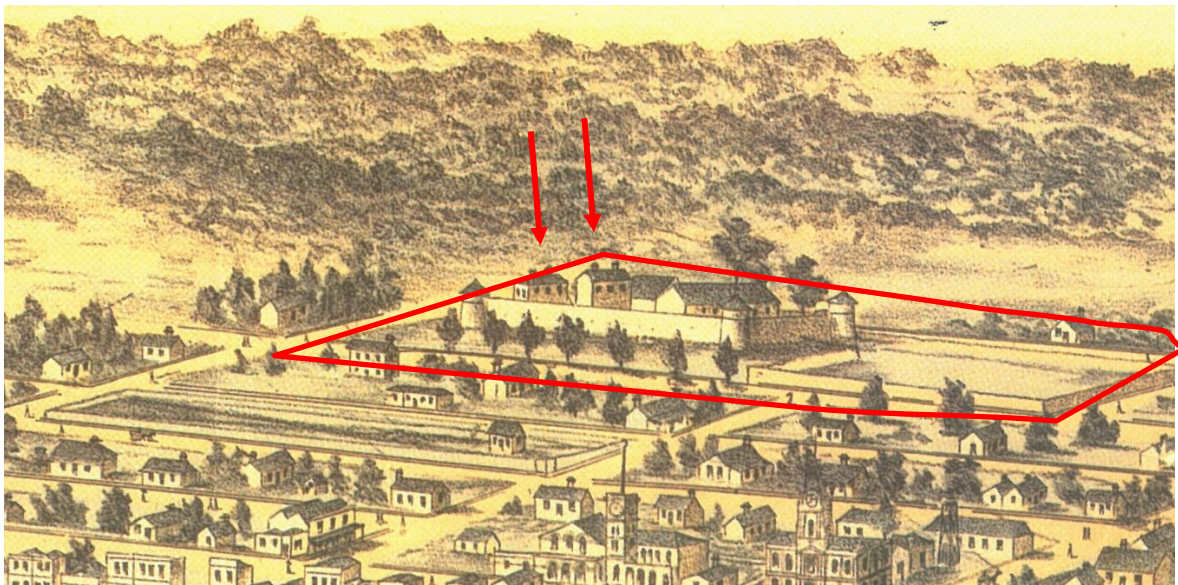


Figure 23. Extract of 1886 lithograph showing the former Maryborough Gaol complex. The extant buildings at 94 and 96 Inkerman Street are demarcated by arrows. The approximate extent of the Former Gaol Precinct is demarcated in red. Inkerman Street is at the left-hand side of the box. *Source:* Niven, F. W. c.1886. *View of Maryborough, Victoria, Australia*. Lithograph. In CGSC Art Gallery. Central Goldfields Shire.



Figure 24. c.1866 photograph showing the Maryborough Gaol. *Source:* Unknown. c.1866. *H.M. Gaol, Maryboro.* Photograph: albumen silver, 22.5 x 28 cm. State Library of Victoria.

<https://www.slv.vic.gov.au/pictoria/gid/slv-pic-aab35031>.

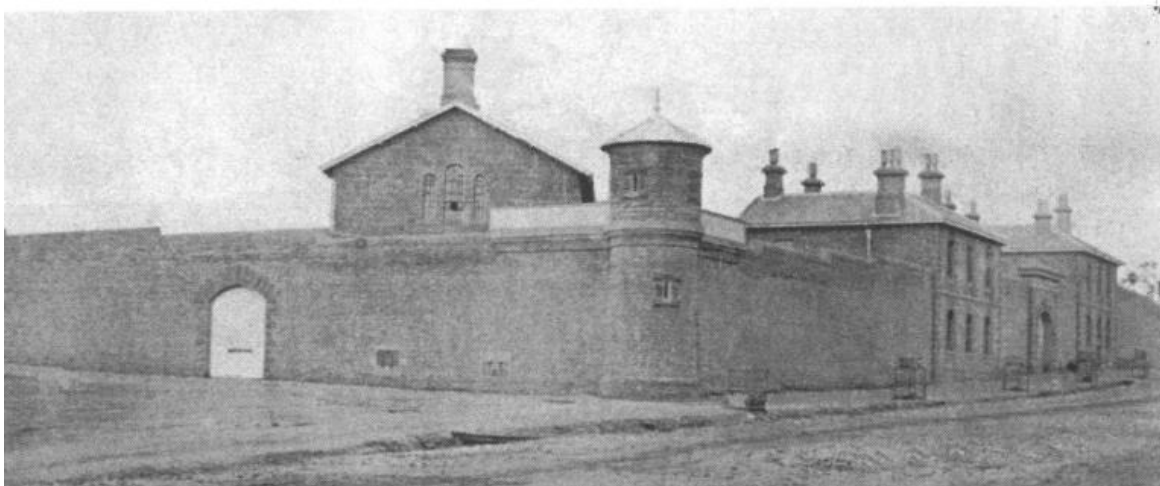


Figure 25. Late 1860s view of the Maryborough Gaol from Inkerman Street. *Source:* Osborn, B. 1995. *Against the Odds: Maryborough 1905-1961.* Maryborough, Vic.: Central Goldfields Shire Council.

As conditions for the destitute improved, dependency on the gaol as a poorhouse decreased, resulting in its closure and the subsequent housing development on the site. The development of several courthouses by the late nineteenth century also diminished the importance of the Gaol, and the buildings had become run down by 1900 (Osborn and DuBourg 2011, 309). From 1902, the Maryborough Gaol was used as a police lock-up, and by 1905, the building was described as a “veritable monument of uselessness” located on the outskirts of town (Osborn 1995, 2). Land to the east of the buildings within the gaol complex, along with land opposite the complex fronting Barkly Street, appears to have been subdivided shortly after (Bick et al. 1992) (Figure 26). However, only several of the vacant allotments along the southern Barkly Street allotments were developed upon (see Figure 27).

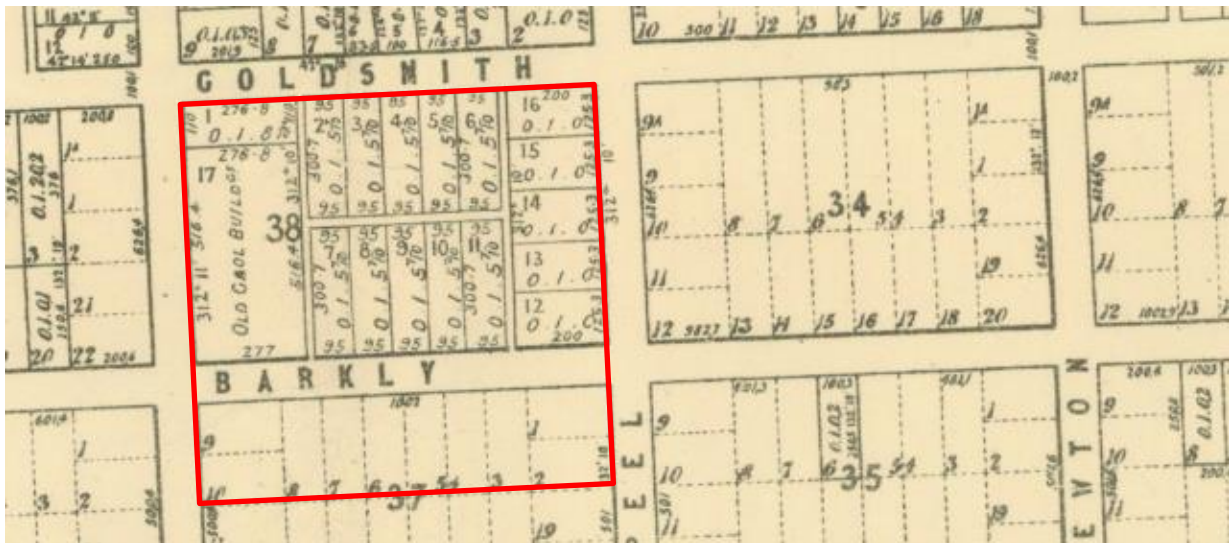


Figure 26. 1905 allotment plan showing the Former Gaol Precinct outlined in red. Note the subdivided land to the east of the 'Old Gaol Buildings'. *Source:* Department of Crown Lands and Survey. 1905. *Parish of Maryborough, County of Talbot. Map, 57 x 69 cm. Maps Collection. State Library of Victoria.*

Meanwhile, the buildings themselves remained in situ until they were formally closed in 1914, which saw all buildings with the exception of two front offices and quarters buildings progressively demolished throughout the 1910s and 1920s. Stone from the gaol was used to build the High School in 1915 and then the Pioneer Memorial Tower in 1932-33 (Osborn, 2004, 10-12). The stone was also used for the foundations of several houses, including 36 Nolan Street. Despite the earlier proposed 1902 subdivision on land east of the buildings, the area was not developed upon until the 1930s when it was finally opened up for the private development (see Figure 27). Several residences were however erected on the allotments along Barkly Street opposite the gaol complex by the 1920s (Figure 27).



Figure 27. c.1925 photograph showing the Maryborough Gaol Complex outlined in red. Note Gaol land to the east that has yet to be developed upon, and the Victorian era house at 92 Inkerman Street marked with a red arrow. *Source:* Pratt, Charles Daniel. c.1925. *Country town, possibly Maryborough,*

Victoria. Negative, 10.0 x 12.5 cm. In collection: Airspy collection of aerial photographs. ID 1653861. State Library of Victoria.

Following the provision of private development on the site of the former Gaol, freestanding residences were erected throughout the 1930s, with several substantial villas erected by 1932 (Osborn, 2004, 10-12). With the exception of the earlier Victorian residence at 92 Inkerman Street, existing residences along the southern side of Barkly Street were also replaced with interwar dwellings. By this period, the land bounded by present day Goldsmith Street, Old Gaol Lane, Barkly Street, and Inkerman Street had also been subdivided around the surviving front offices and quarters buildings (see Figure 28).

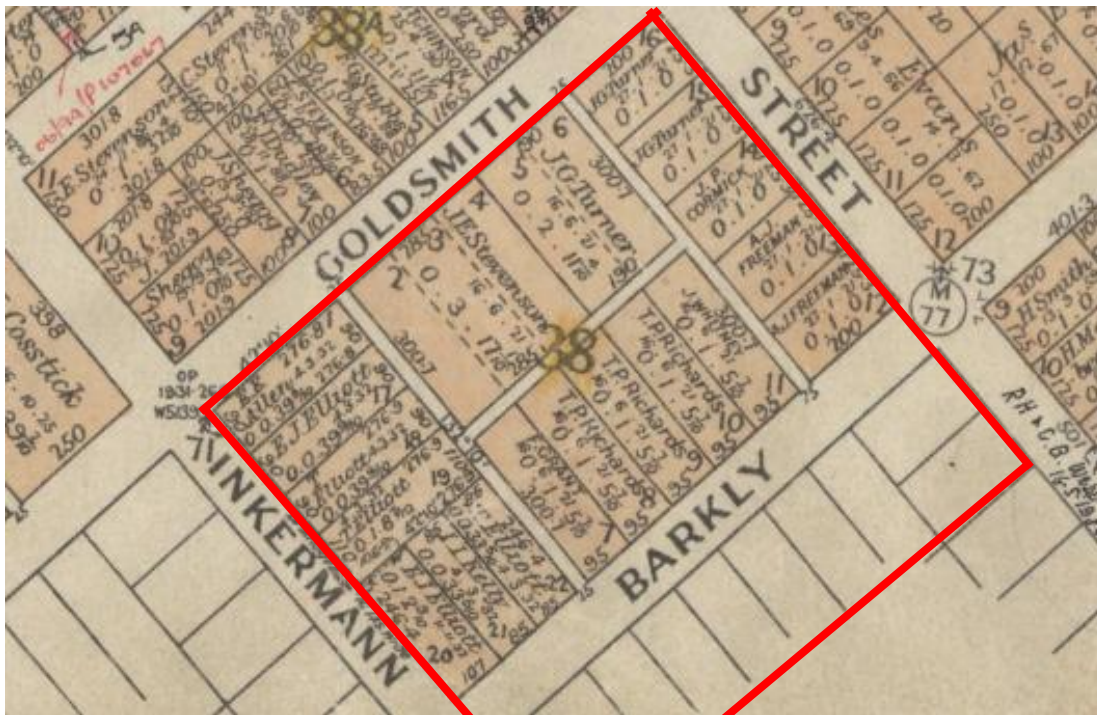


Figure 28. 1948 township plan showing the Former Gaol Precinct outlined in red. *Source:* Department of Lands and Survey. 1948. *Township of Maryborough - Parish of Maryborough – Country of Talbot.* Map. In collection: Regional Land Office Parish and Township Plans Digitised Reference Set. VPRS16171. Public Record Office Victoria.

These newly established houses consisted of a mixture of timber and brick masonry interwar dwellings designed in the Bungalow, Arts and Crafts and Old English styles. The style and scale of these early 1930s houses not only reflected the stylistic eclecticism of the period, but also a renewed period of home building in the following the economic prosperity stemming from industrialisation.

The first to be completed was bookmaker Tom Elliott's Arts and Crafts style residence at 25 Barkly Street (Osborn, 2004, 10-12; Maryborough Advertiser 1932). Notably, it featured bluestone and timber materials derived from the demolished Gaol buildings (Osborn, 2004, 10-12; Maryborough Advertiser 1932). Elliot would also oversee the development of the Spanish Mission style villa at 21 Barkly Street (Maryborough Advertiser 1932). Other buildings of note include the Streamline Moderne style residence and associated allotment at 20 Goldsmith Street, which constructed in 1952 following J. E. Stevenson's consolidation of three allotments

(see Figure 28). The anachronistic application of the Streamline Moderne style in this instance, typical of the 1930s, represents the continuation of building styles in country towns after they had lost their popularity within the city of Melbourne and other state capitals. While a number of buildings along the southern side of Barkly Street been demolished and replaced with post-war austerity or contemporary style buildings, the majority of the interwar housing stock survive intact. As of 2023, these houses continue to remain in use as private residences.

## Comparative Analysis

As a regional pocket in Central Victoria rapidly transformed by the discovery of gold, the development and consolidation of the Maryborough township from the mid-nineteenth century onwards is readily comparable to several mid-scale Gold Rush centers that are scattered across the Goldfields region of Central and Western Victoria. As similarly demonstrated in the goldfields townships of Castlemaine, Ararat, Creswick, Maldon and Dunolly, this historical development pattern broadly consists of intense civic, commercial and residential development concentrated in the original town center throughout the 1850s and 1880s following the discovery of gold, and further residential development along newly established streets surrounding the original town center throughout the 1880s and early 1900s. In the case of Maryborough, Castlemaine and Ararat, these phases were additionally followed by a renewed wave of subdivisions and infill development in the interwar period associated with the emergence of manufacturing industries (GML Heritage 2022, 55-57; Banfield 1974; Osborn 1995).

With streetscapes primarily characterised by stylistically eclectic interwar era houses, the Former Gaol Precinct comprises a distinct residential era that illustrates the proliferation of housing in the early 1930s following industrialisation. The precinct's developmental history, resulting from the closure of the Maryborough Gaol and subsequent subdivision, is unusual within Maryborough and the surrounding townships, with comparable residential examples typically consisting of more modest interwar houses interspersed between earlier Victorian and Federation era dwellings. While there are no directly comparable precincts in terms of this development history, there are residential areas subject to the Heritage Overlay within Maryborough that compare with the Former Gaol Precinct in other ways.

Comparable examples include:

- **Raglan Street Precinct, Maryborough (Central Goldfields Shire HO TBC).** Raglan Street Precinct comprises a small residential area of properties constructed between c.1860s and 1930s. It is comparable as a cohesive group of freestanding, predominantly modest scale, Victorian, Federation and interwar residences, interspersed with some post-war infill development, of brick or weatherboard construction. Although it was subdivided earlier than the Former Gaol Precinct, it compares in terms of visual consistency stemming from consistent setbacks, materials, scale, detailing and form despite variation in styles and typology.
- **Palmerston Street Precinct, Maryborough (Central Goldfields Shire HO TBC).** Palmerston Street Precinct comprises a residential area featuring streetscapes of freestanding, single-storey properties constructed between c.1870 and c.1940. Although the Palmerston Street Precinct lacks the development history of the Former Gaol Precinct, and is of a much larger scale, the two precincts bear similarities in terms of form, massing,

materiality, siting, and arrangement. Both precincts present a significant number of interwar era houses and are comparable as a group of modestly scaled Victorian, Federation, and interwar era properties with consistent setbacks, materials, scale, detailing and form.

- **Camp Reserve and Environs, Castlemaine (HO668, Mount Alexander Shire).** The Camp Reserve and Environs compares as a large residential area characterised by a mixture of substantially intact, modestly scaled Victorian, Federation and interwar residences set on generously sized allotments. As with the above examples, its housing stock is more diverse owing to the layers of residential development dating back to the mid nineteenth century. Nevertheless, there are several interwar examples, while generally more modest in terms of ornamentation, that compare in terms of intactness, style, materials, and scale.

## Precinct Map



Figure 29. Map showing individual property gradings within the Former Gaol Precinct.

## Grading Table

\* S: Significant

C: Contributory

NC: Non-contributory

Refer to Heritage Victoria's Model brief for consultants (p.6) for explanation of designations.

*Note: the Style/era column follows the architectural style categories set out in Heritage Victoria's HERMES Orion heritage database and does not necessarily reflect the date of construction. For details on construction era(s) where available, refer to the Place History section.*

Street address	Place type	Style/era	Grading
92 Inkerman Street, Maryborough	Residential	Victorian Period (1851-1901)	C
94 Inkerman Street, Maryborough	Residential	Victorian Period (1851-1901)	S
96 Inkerman Street, Maryborough	Residential	Victorian Period (1851-1901)	S
98 Inkerman Street, Maryborough	Residential	Federation/Edwardian Period (1902-c.1918)	C
100 Inkerman Street, Maryborough	Residential	Federation/Edwardian Period (1902-c.1918)	C (residence), S (fence)
102 Inkerman Street, Maryborough	Residential	Victorian Period (1851-1901)	C
21 Barkly Street, Maryborough	Residential	Interwar Period (c.1910-c.1940)	S
23 Barkly Street, Maryborough	Residential	Interwar Period (c.1910-c.1940)	C
24 Barkly Street, Maryborough	Residential	Contemporary	NC
25 Barkly Street, Maryborough	Residential	Interwar Period (c.1910-c.1940)	S
26 Barkly Street, Maryborough	Residential	Interwar Period (c.1910-c.1940)	C
27 Barkly Street, Maryborough	Residential	Interwar Period (c.1910-c.1940)	C
28 Barkly Street, Maryborough	Residential	Interwar Period (c.1910-c.1940)	C
29 Barkly Street, Maryborough	Residential	Interwar Period (c.1910-c.1940)	C
30 Barkly Street, Maryborough	Residential	Interwar Period (c.1910-c.1940)	C
31 Barkly Street, Maryborough	Residential	Interwar Period (c.1910-c.1940)	C
32 Barkly Street, Maryborough	Residential	Contemporary	NC
33 Barkly Street, Maryborough	Residential	Interwar Period (c.1910-c.1940)	C

<i>Street address</i>	<i>Place type</i>	<i>Style/era</i>	<i>Grading</i>
34 Barkly Street, Maryborough	Residential	Federation/Edwardian Period (1902-c.1918)	C
35 Barkly Street, Maryborough	Residential	Interwar Period (c.1910-c.1940)	C
36 Barkly Street, Maryborough	Residential	Post-war Period (1945-1965)	NC
18 Goldsmith Street, Maryborough	Residential	Victorian Period (1851-1901)	C
20 Goldsmith Street, Maryborough	Residential	Interwar Period (c.1910-c.1940) Built in 1952	S
24 Goldsmith Street, Maryborough	Residential	Post-war Period (1945-1965)	NC
26 Goldsmith Street, Maryborough	Residential	Interwar Period (c.1910-c.1940)	C
28 Goldsmith Street, Maryborough	Residential	Interwar Period (c.1910-c.1940)	C
30 Goldsmith Street, Maryborough	Residential	Interwar Period (c.1910-c.1940)	C
5 Peel Street, Maryborough	Residential	Interwar Period (c.1910-c.1940)	C
7 Peel Street, Maryborough	Residential	Interwar Period (c.1910-c.1940)	C
9 Peel Street, Maryborough	Residential	Federation/Edwardian Period (1902-c.1918)	C
11 Peel Street, Maryborough	Residential	Federation/Edwardian Period (1902-c.1918)	C
13 Peel Street, Maryborough	Residential	Federation/Edwardian Period (1902-c.1918)	C
15 Peel Street, Maryborough	Residential	Federation/Edwardian Period (1902-c.1918)	C
17 Peel Street, Maryborough	Residential	Federation/Edwardian Period (1902-c.1918)	C

## References

Banfield, L. 1974. *Green pastures and gold: a history of Ararat*. Canterbury, Victoria: Mullaya Publications.

Bick, D, C Kellaway, P Milner and J Patrick. 1992. 'Maryborough Heritage Study 1992: Book 2 Albert St to Christian St.' Unpublished report prepared for the Central Goldfields Shire. PDF file.

*Construction* (Sydney).

Flett, J. 1975. *Maryborough, Victoria: Goldfields History*. Glan Waverley: Poppet Head Press.

*Geelong Advertiser and Intelligencer* (Geelong).

GML. 2022. 'Maldon Historic Central Area Precinct Review: Stage 2 – Detailed Assessment.' Unpublished report prepared for the Mount Alexander Shire Council. PDF file.

Gordon & Gotch. 1903. *The Australian Handbook and Shippers' and Importers' Directory*. London: Gordon and Gotch.

Jeffrey, R, ed. 1934. *Victorian Personalities Past and Present: An Historical Review*. Melbourne: Pioneer Publishing Co.

*Maryborough and Dunolly Advertiser* (Maryborough).

Osborn, B. 1995. *Against the Odds: Maryborough 1905-1961*. Maryborough, Vic.: Central Goldfields Shire Council.

Osborn, B. 2004. 'Maryborough Gaol 1861-1902'. Maryborough Midlands Historical Society Inc.

Osborn, B and DuBourg, T. 2011. *Maryborough: A Social History 1854-1904*. Maryborough: Central Goldfields Shire Council.

*The Argus* (Melbourne).

*The Herald* (Melbourne).

## Limitations

1. Access to all heritage places was limited to visual inspection from the public domain. The interiors of buildings and inaccessible areas such as rear gardens were not accessed as part of this heritage study.
2. Condition and site modification assessment was limited to a visual inspection undertaken from the public domain.
3. The historical notes provided for this citation are not considered to be an exhaustive history of the site.

All photographs included in this document have been taken by Extent Heritage Pty Ltd unless otherwise sourced.

## Further Images



Figure 30. View of 21 Barkly Street, from Inkerman Street.



Figure 31. Looking toward Inkerman Street from the intersection of Barkly and Inkerman Street.



Figure 32. 25 Barkly Street, Maryborough.



Figure 33. Detail view of bluestone base at 25 Barkly Street, Maryborough derived from the former Maryborough Gaol buildings.